


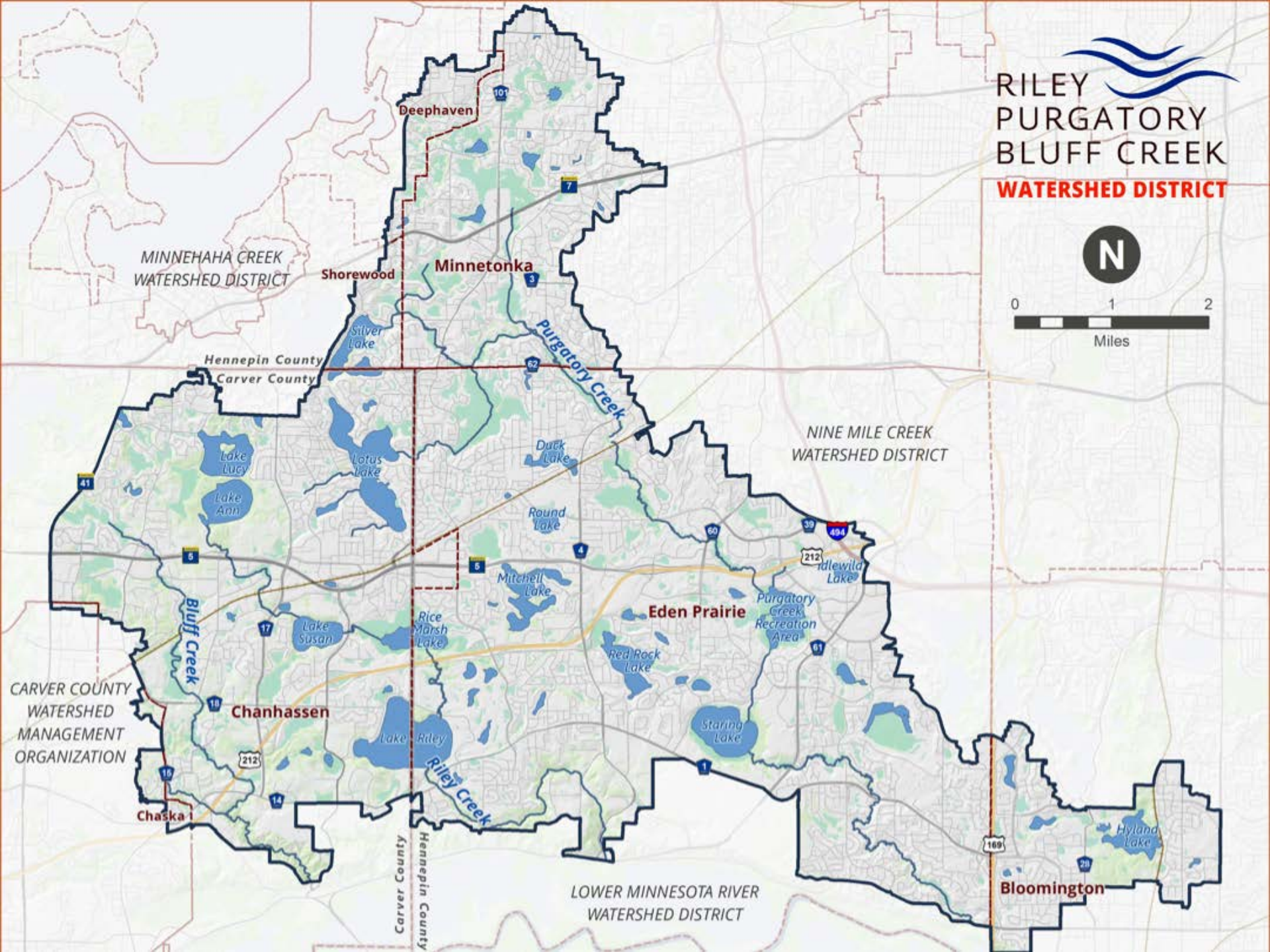
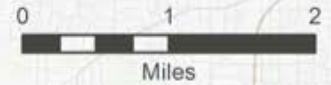


2017 RPBCWD Annual Report Summary

Board Meeting – February 7th 2017



RILEY
PURGATORY
BLUFF CREEK
WATERSHED DISTRICT



MINNEHAHA CREEK
WATERSHED DISTRICT

Shorewood

Minnetonka

Hennepin County
Carver County

NINE MILE CREEK
WATERSHED DISTRICT

Eden Prairie

CARVER COUNTY
WATERSHED
MANAGEMENT
ORGANIZATION

Chanhassen

Chaska

LOWER MINNESOTA RIVER
WATERSHED DISTRICT

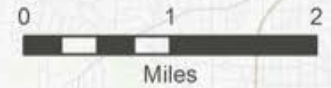
Bloomington

Carver County
Hennepin County

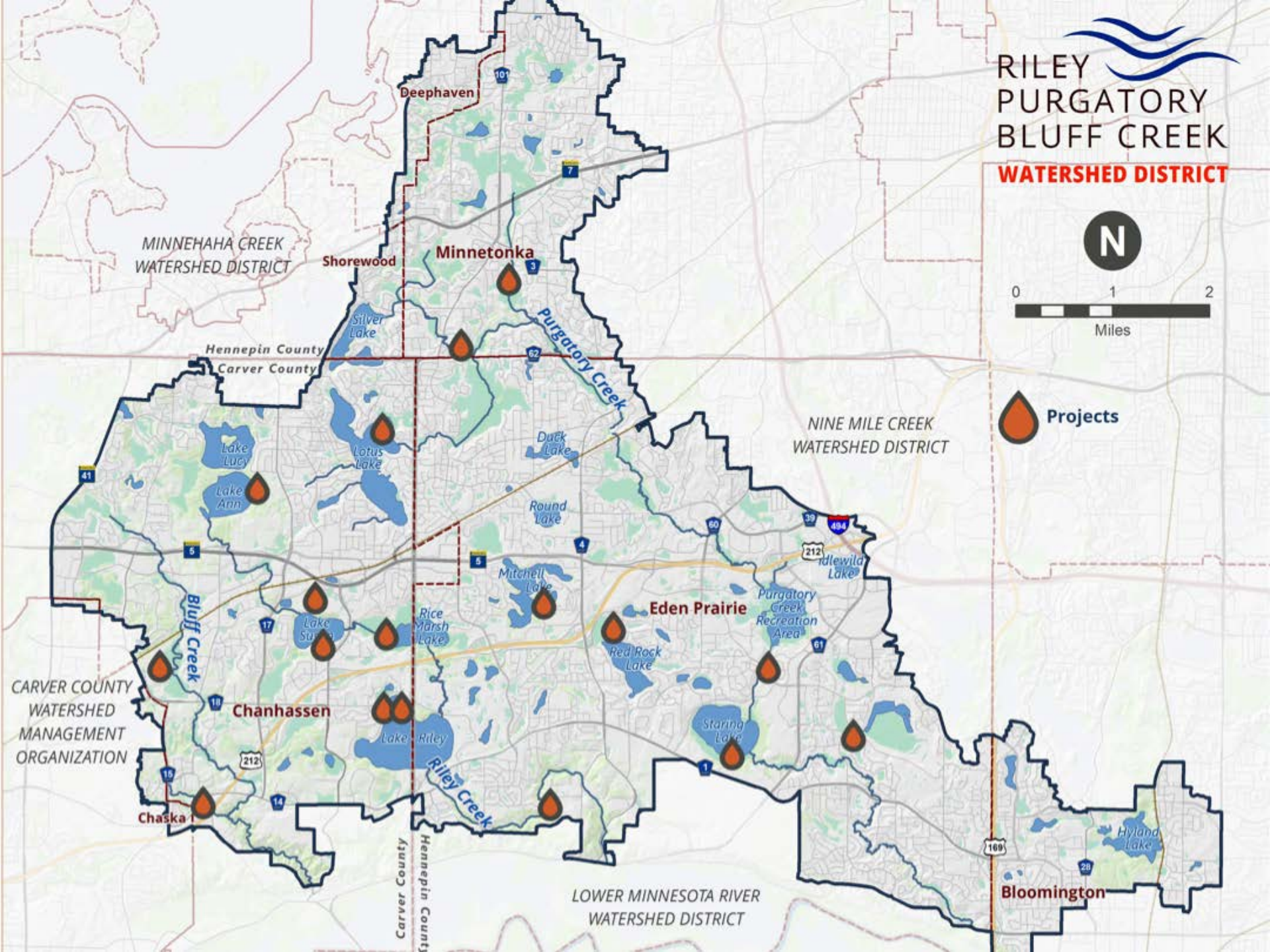


RILEY
PURGATORY
BLUFF CREEK

WATERSHED DISTRICT



Projects



MINNEHAHA CREEK
WATERSHED DISTRICT

Shorewood

Minnetonka

Hennepin County
Carver County

NINE MILE CREEK
WATERSHED DISTRICT

Eden Prairie

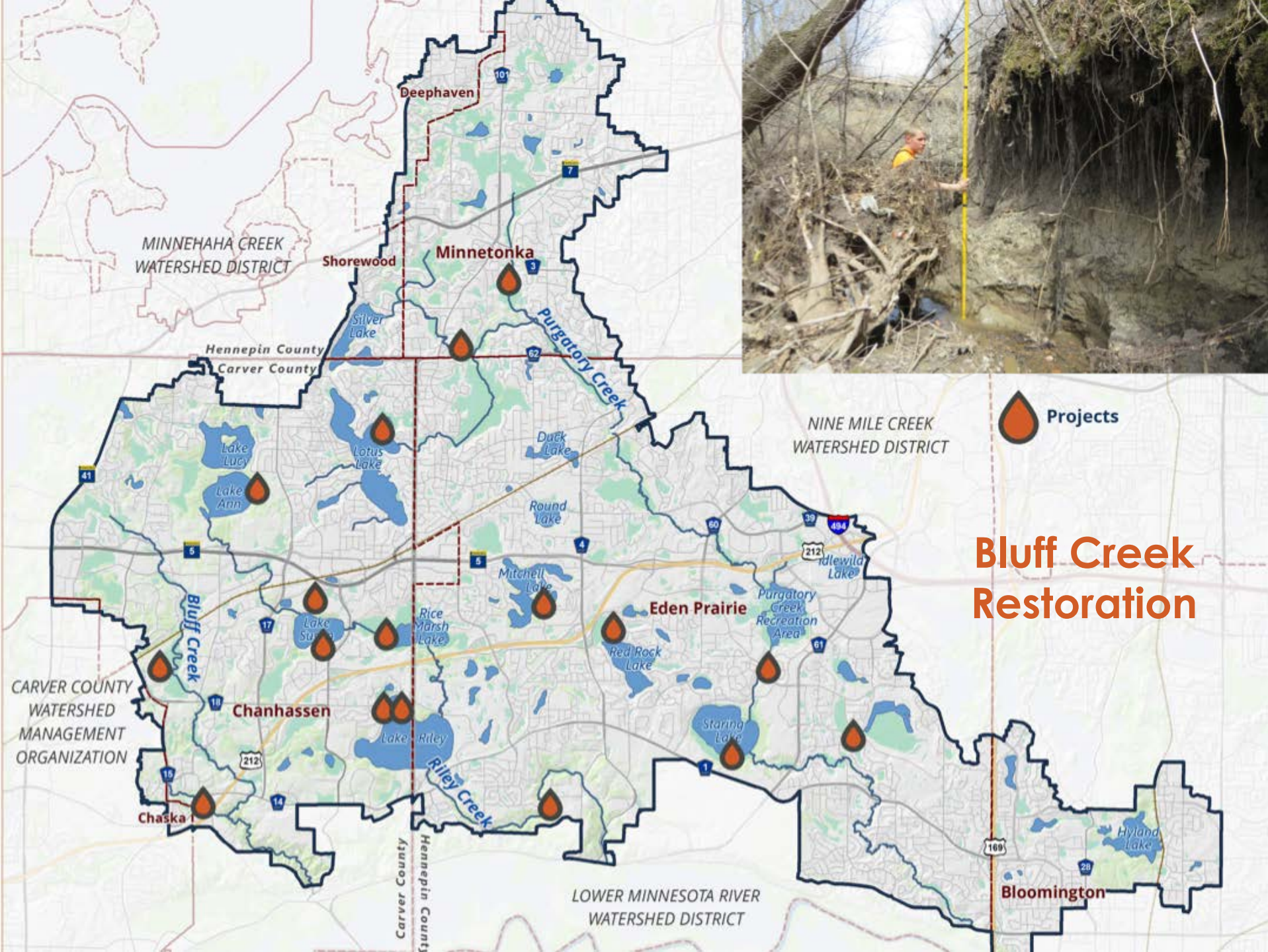
CARVER COUNTY
WATERSHED
MANAGEMENT
ORGANIZATION

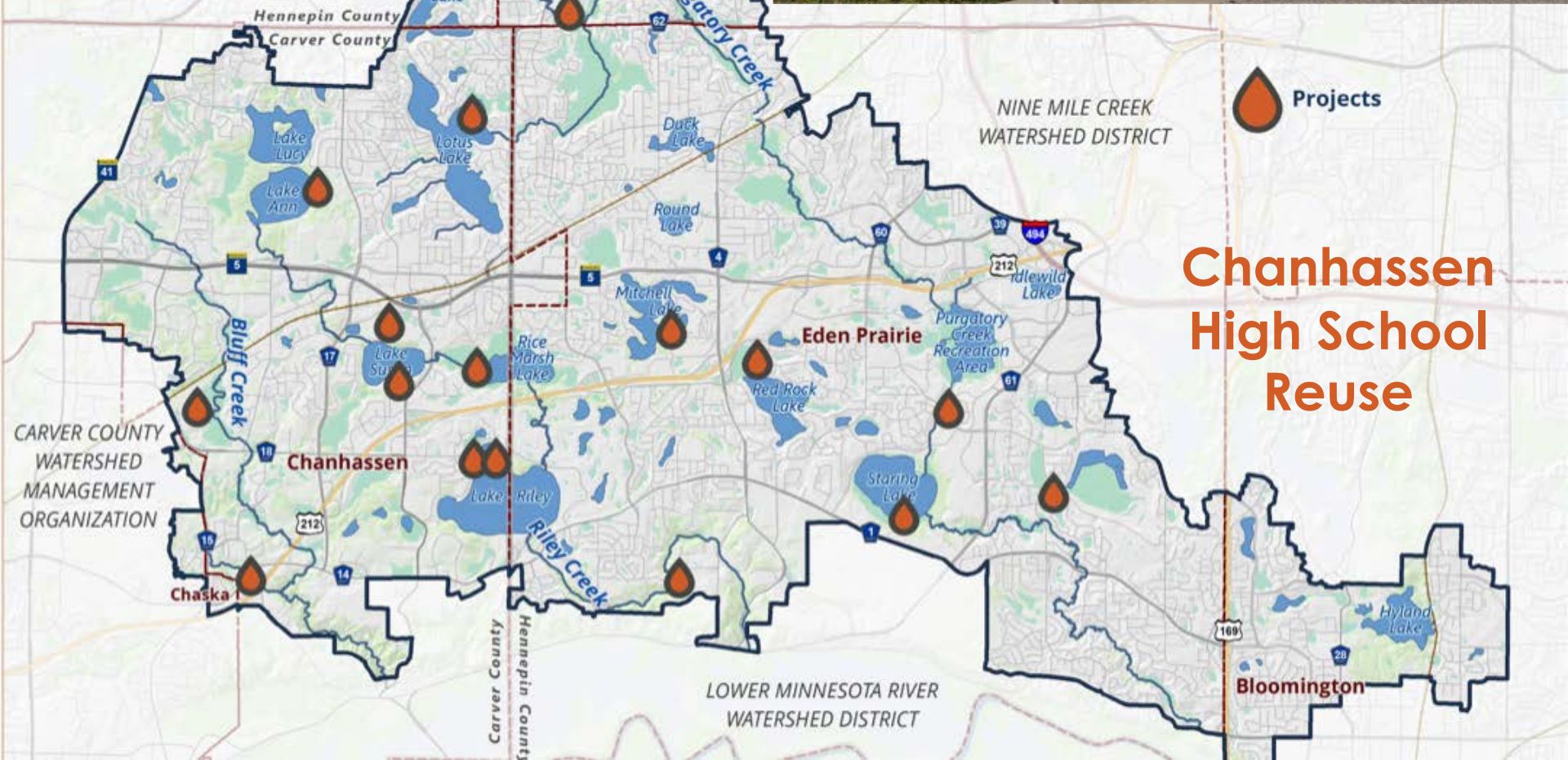
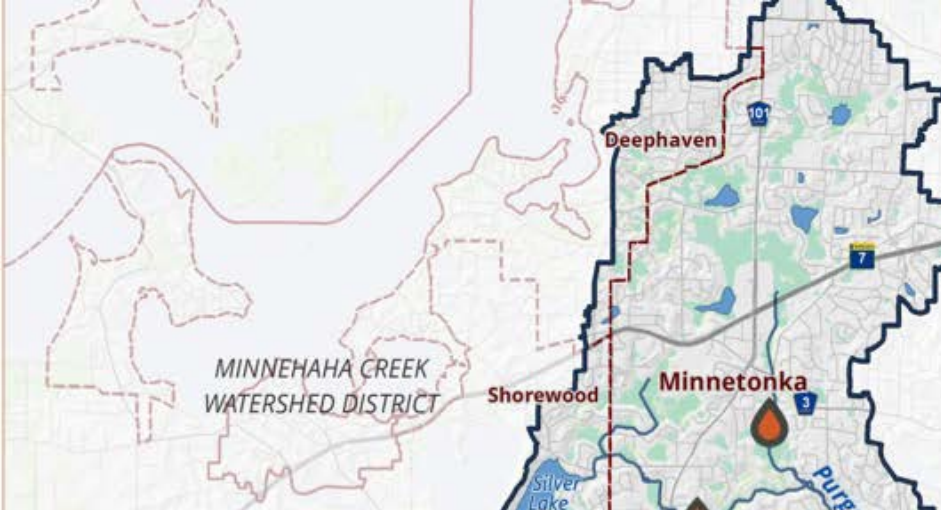
Chanhassen

Chaska

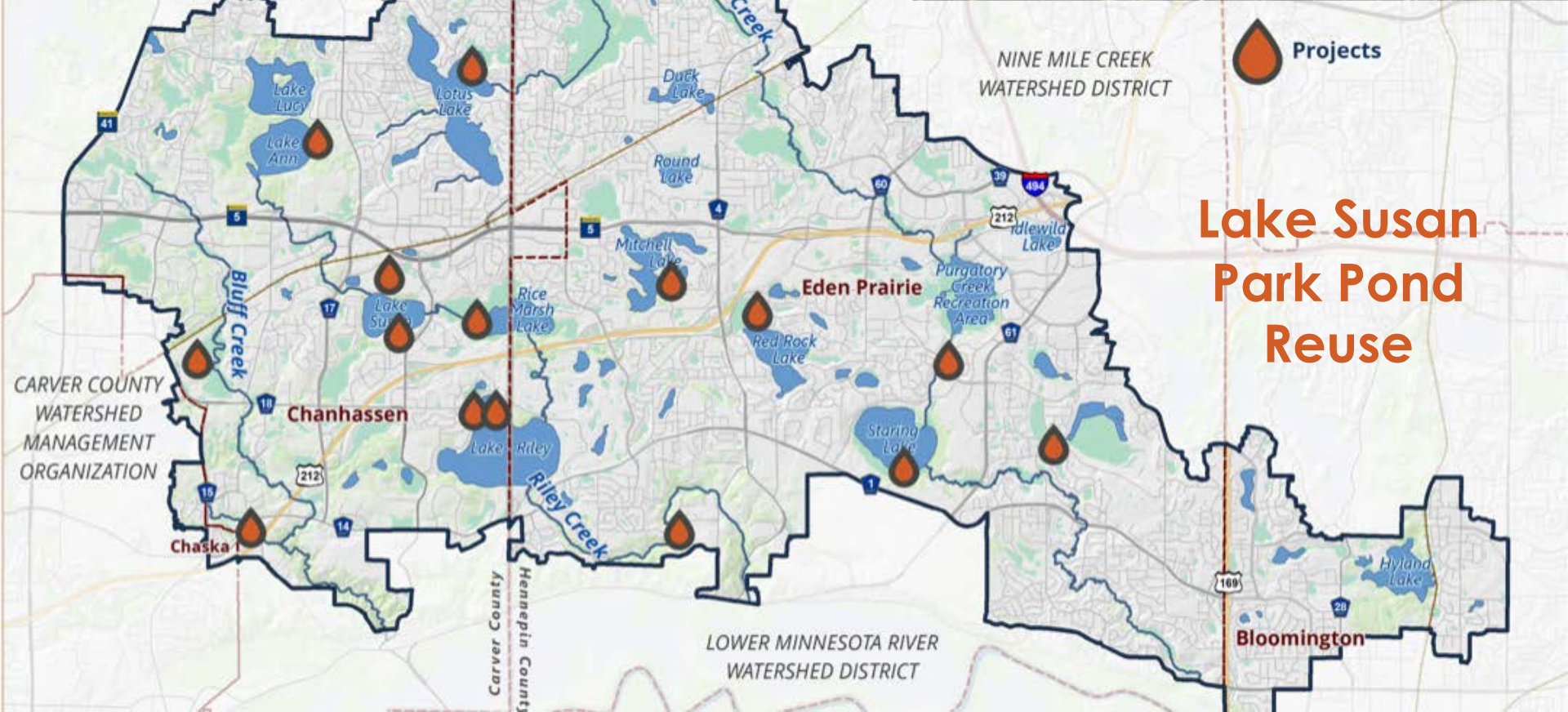
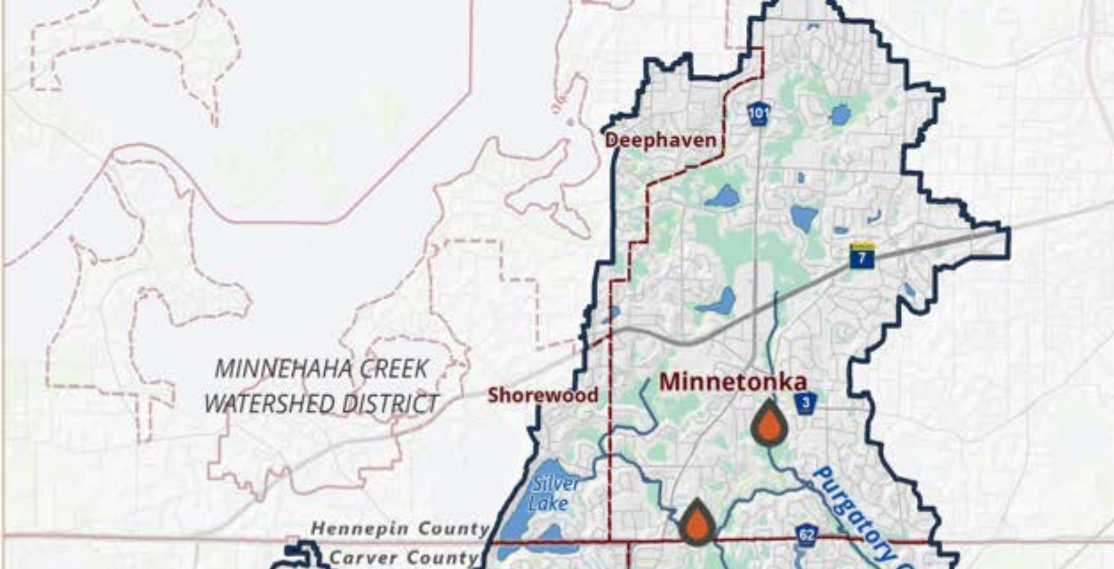
LOWER MINNESOTA RIVER
WATERSHED DISTRICT

Bloomington





Chanhassen High School Reuse



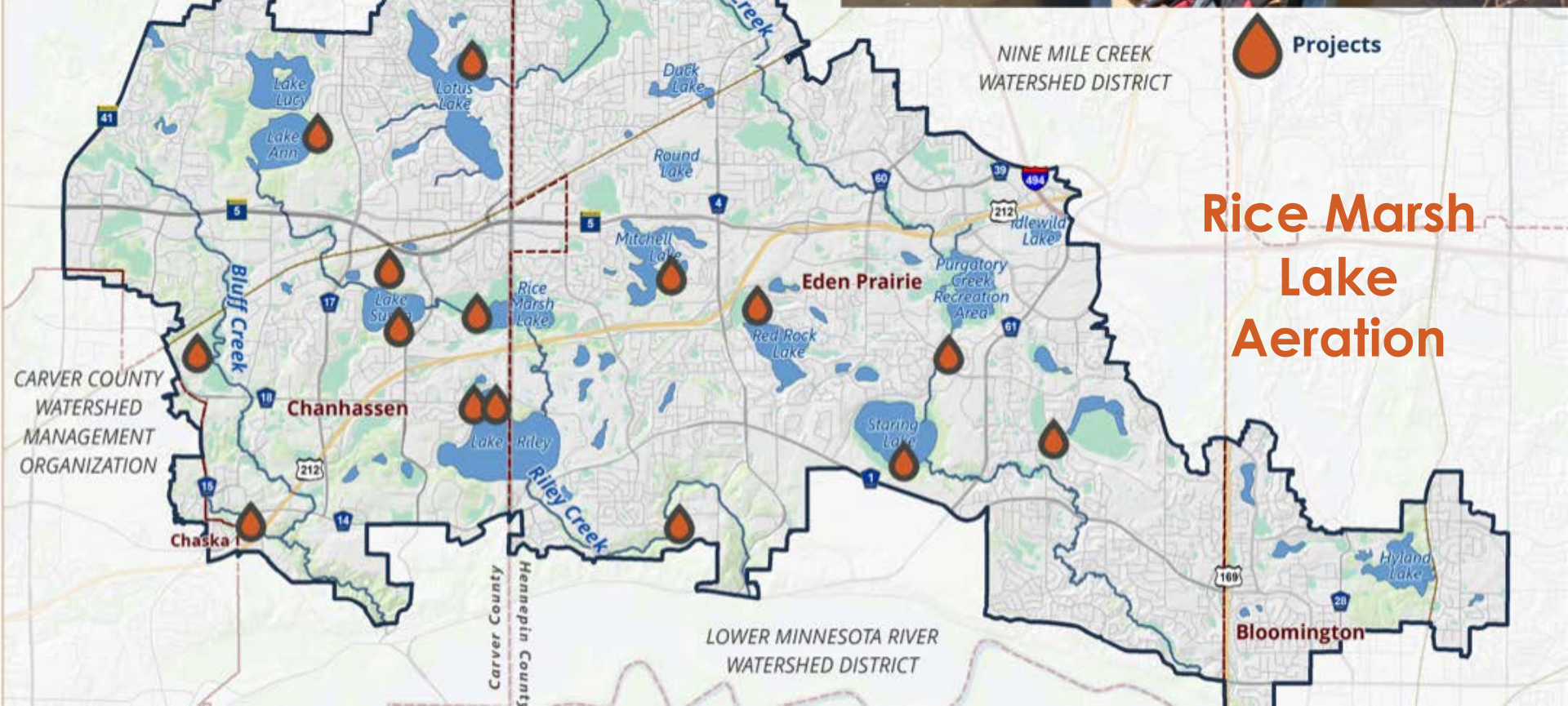
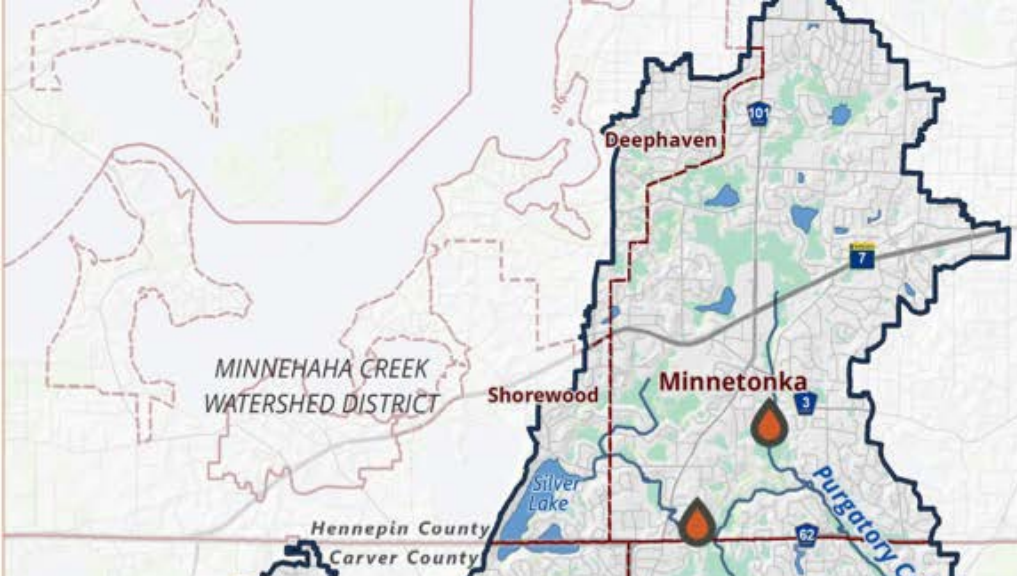
Lake Susan Park Pond Reuse

 Projects

CARVER COUNTY
WATERSHED
MANAGEMENT
ORGANIZATION

LOWER MINNESOTA RIVER
WATERSHED DISTRICT

Bloomington



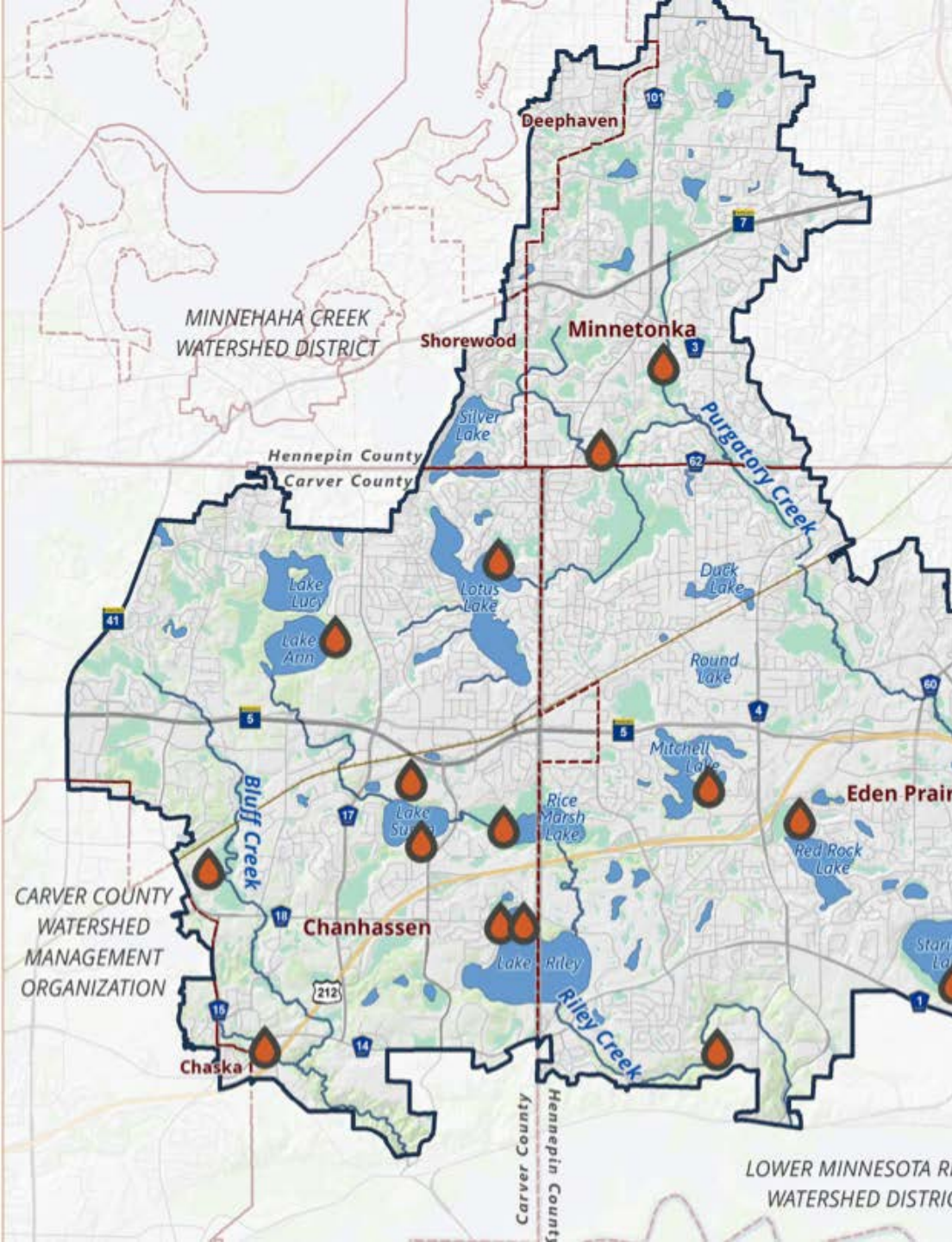
Rice Marsh Lake Aeration

 Projects

CARVER COUNTY
WATERSHED
MANAGEMENT
ORGANIZATION

LOWER MINNESOTA RIVER
WATERSHED DISTRICT

NINE MILE CREEK
WATERSHED DISTRICT



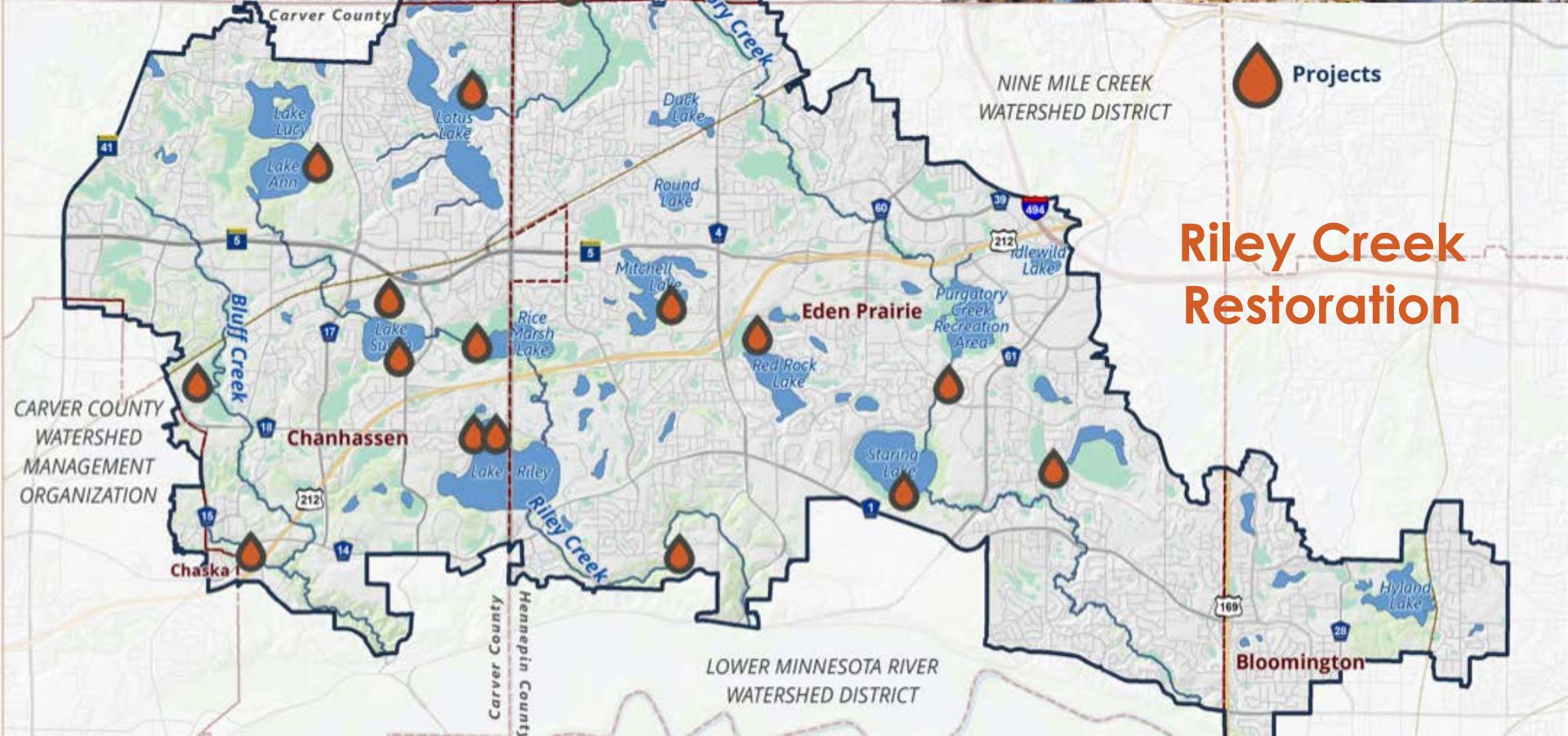
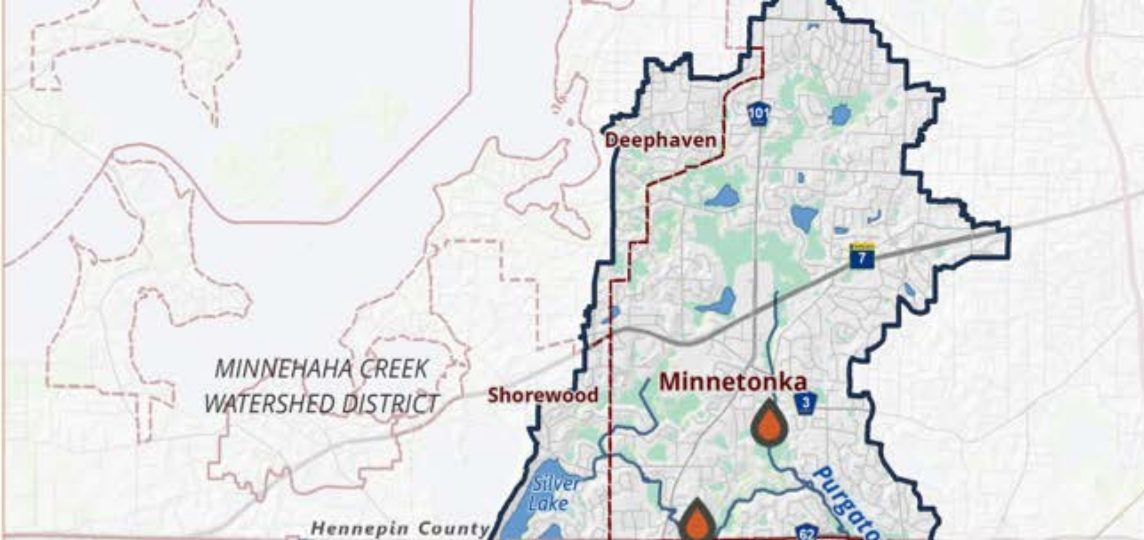
 Projects

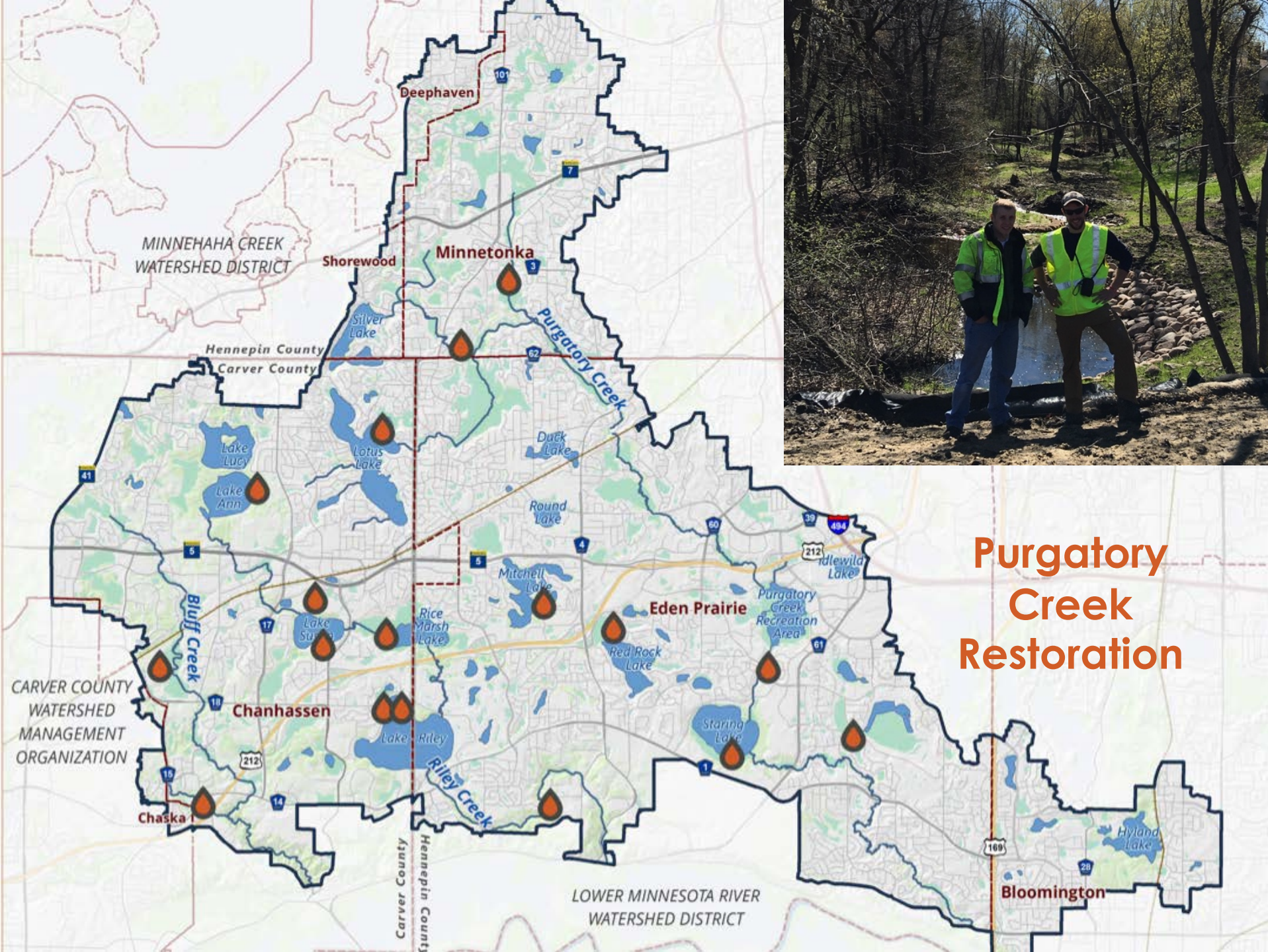
Invasive plant management

CARVER COUNTY
WATERSHED
MANAGEMENT
ORGANIZATION

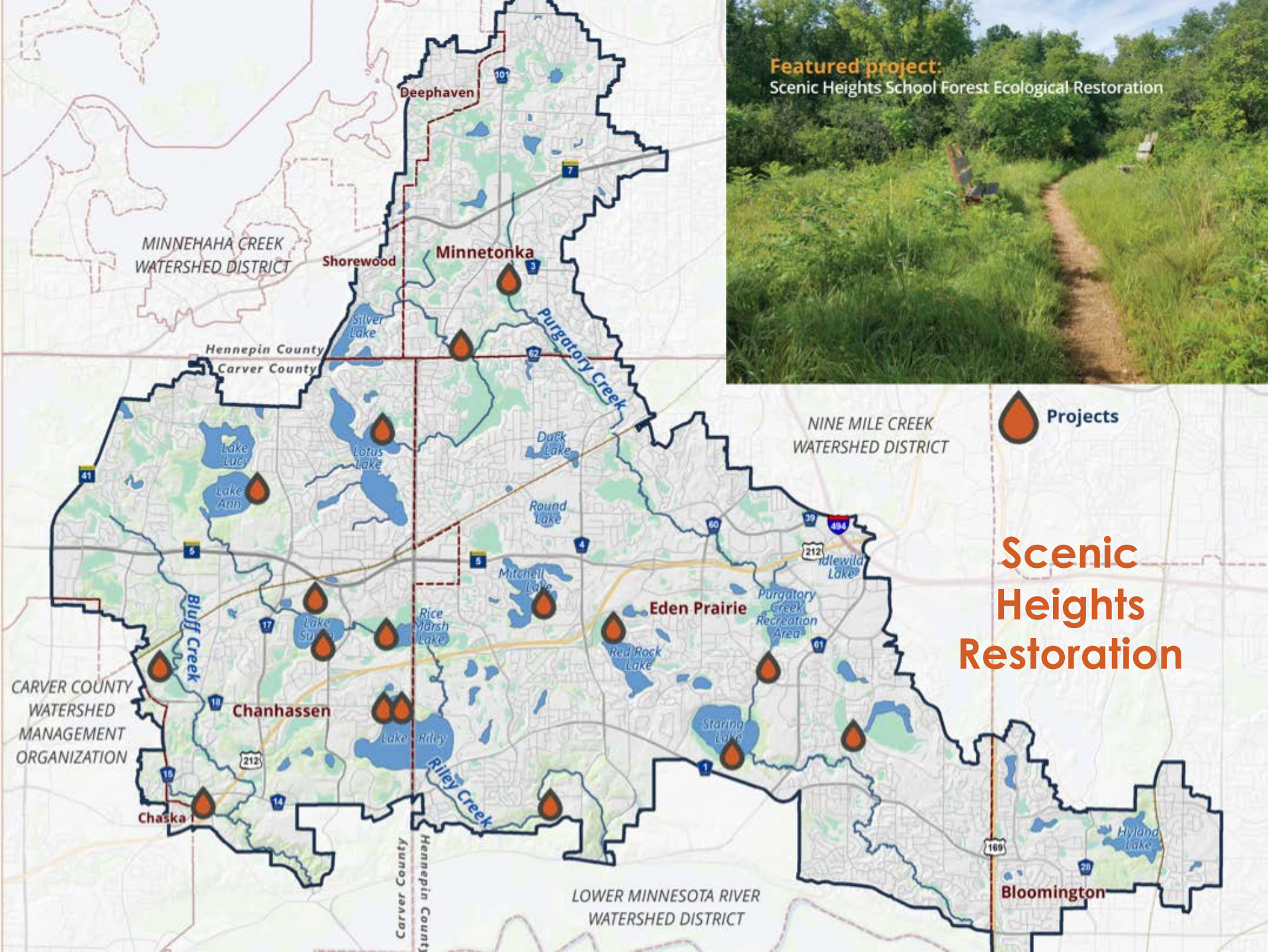
LOWER MINNESOTA RIVER
WATERSHED DISTRICT

Bloomington





Purgatory Creek Restoration



Featured project:
Scenic Heights School Forest Ecological Restoration

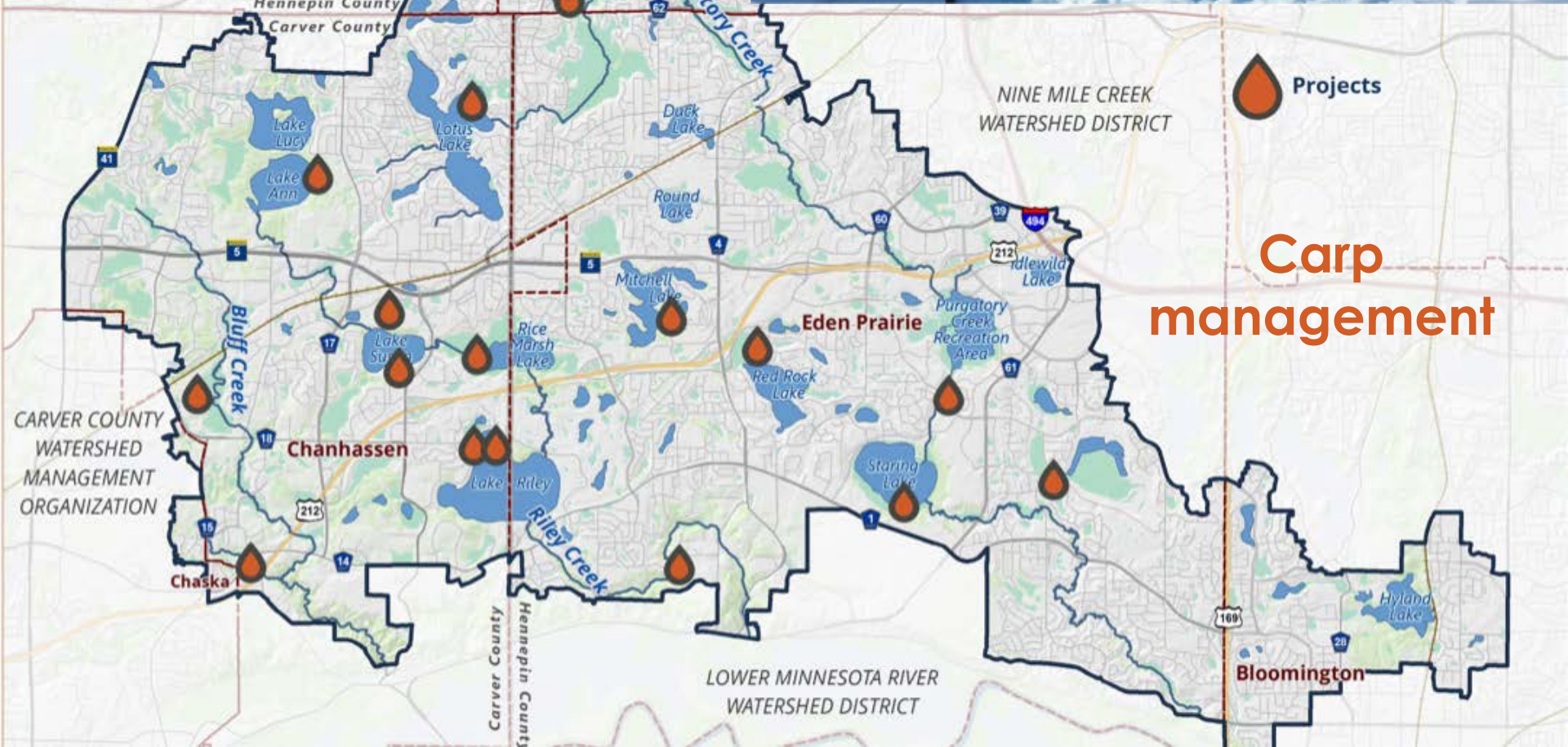
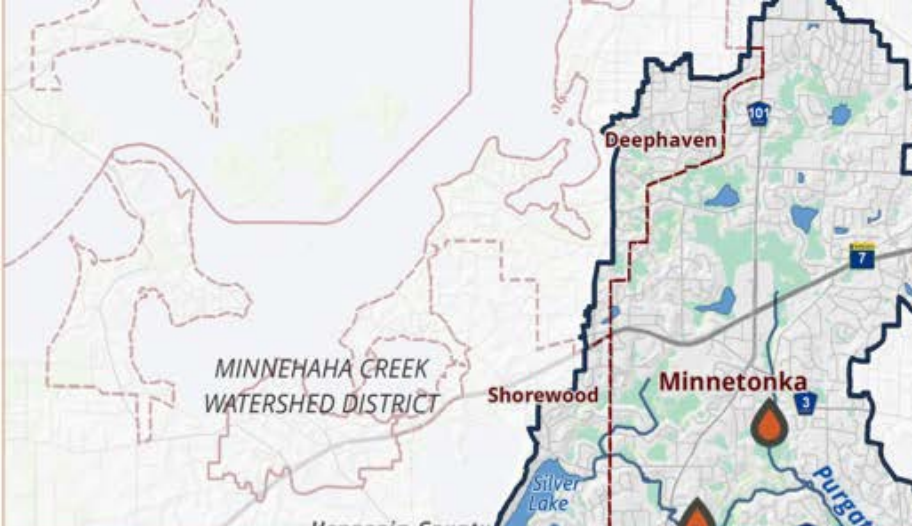
 Projects

Scenic Heights Restoration

CARVER COUNTY
WATERSHED
MANAGEMENT
ORGANIZATION

LOWER MINNESOTA RIVER
WATERSHED DISTRICT


Bloomington



Explore our yard

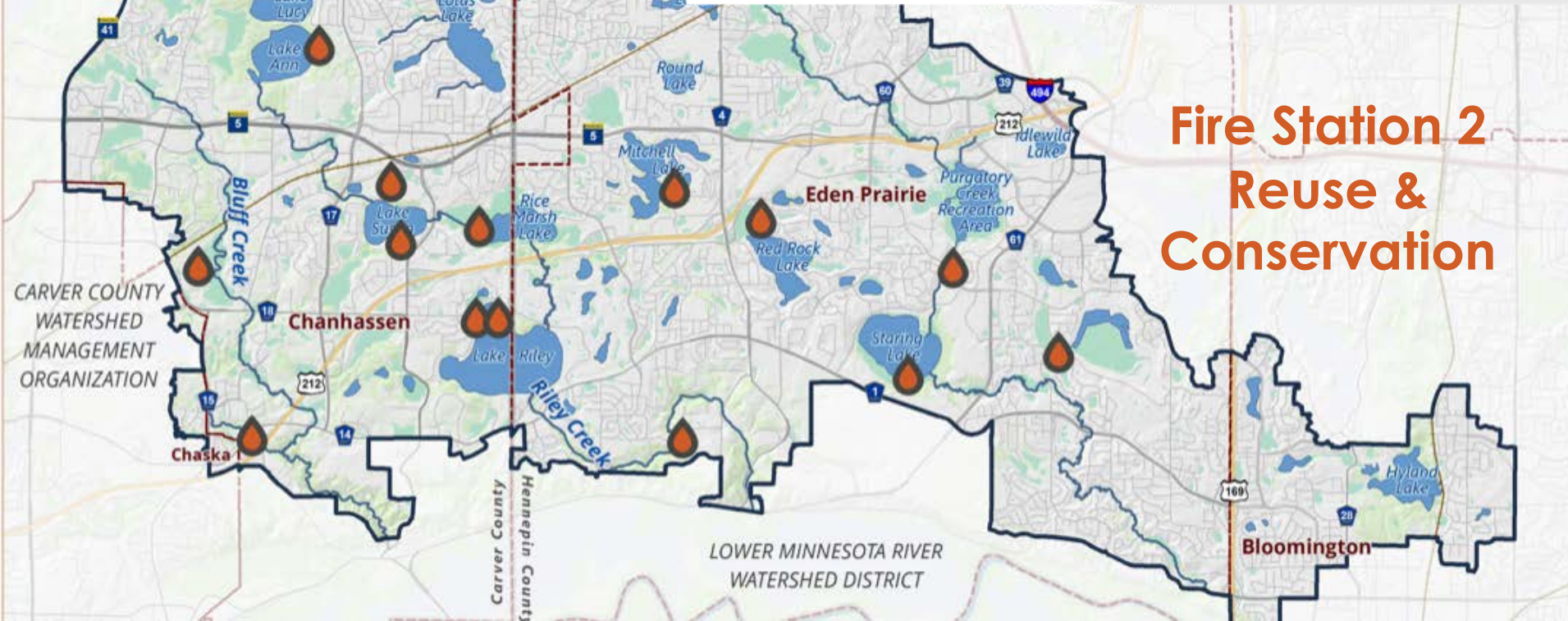
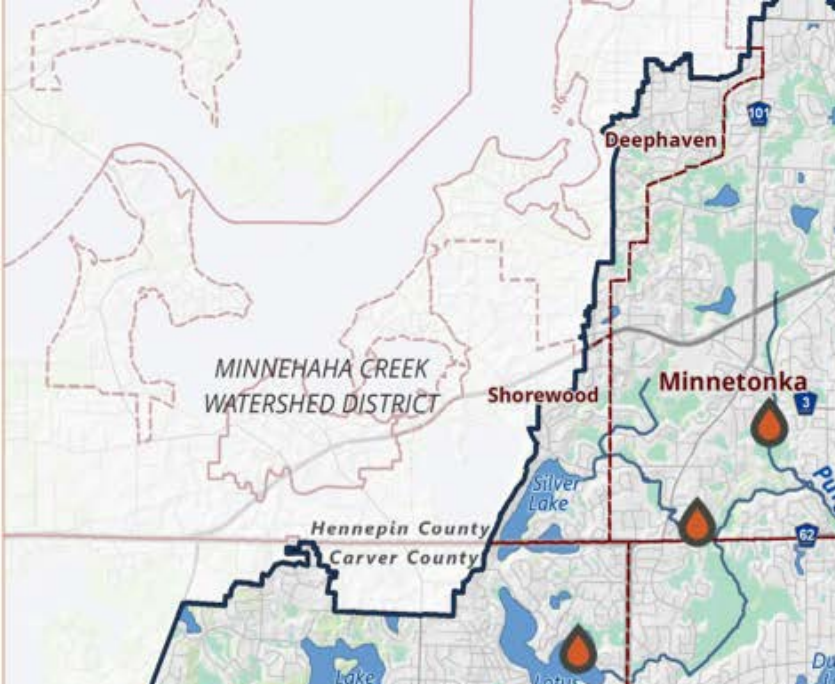
and discover sustainable practices you can take home to yours

This firestation uses practices to conserve water & promote healthy habitat. Explore the grounds to see how the City of Eden Prairie is reducing its water usage, and how you can help by:

-  **Installing a rainbarrel or cistern.** Collecting and reusing rainwater reduces ground water use.
-  **Planting turfgrass alternatives.** Low mow and native grasses need less water. They also decrease pollution, like fertilizer, to local rivers, lakes, and wetlands.
-  **Using native plants.** These plants provide habitat for pollinators, birds, and other animals.



This project is made possible through financial support from the following partners:



Fire Station 2 Reuse & Conservation

CARVER COUNTY
WATERSHED
MANAGEMENT
ORGANIZATION

LOWER MINNESOTA RIVER
WATERSHED DISTRICT

2017 Permit summary

Summary		Estimated		
Permit Type	Number	Total TSS (lbs)	Total TP (lbs)	Volume (cft)
Governmental	21	3,212	19.5	24,090
Private Development	16	20,426	65.7	98,697
Ex. Single Family	31	Not Computed		
Withdrawn/ Review in Progress	5	Not Computed		
TOTAL	73	23,638	85.2	122,787

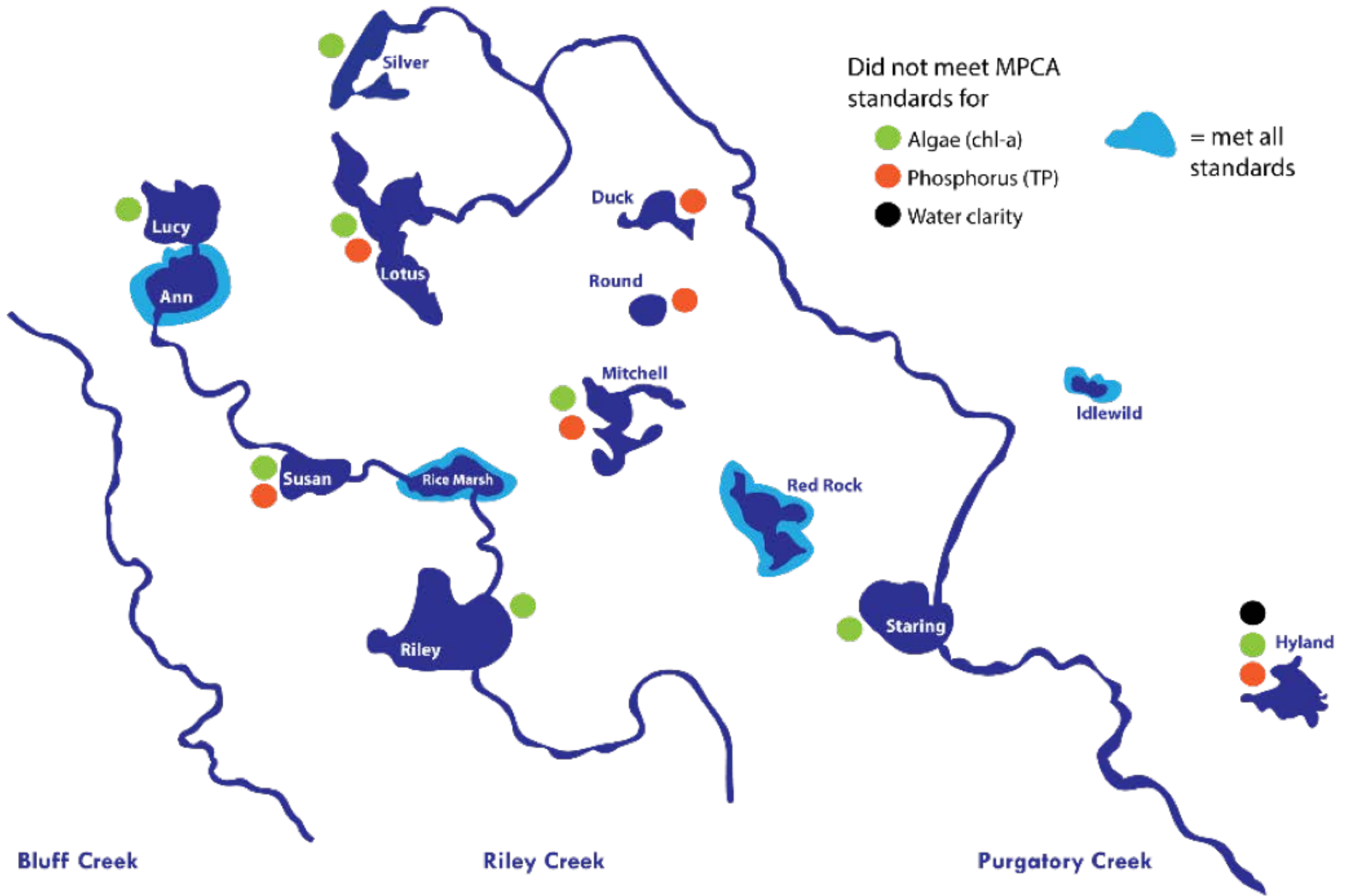


2017 RPBCWD Monitoring Summary

2017 LAKE WATER QUALITY



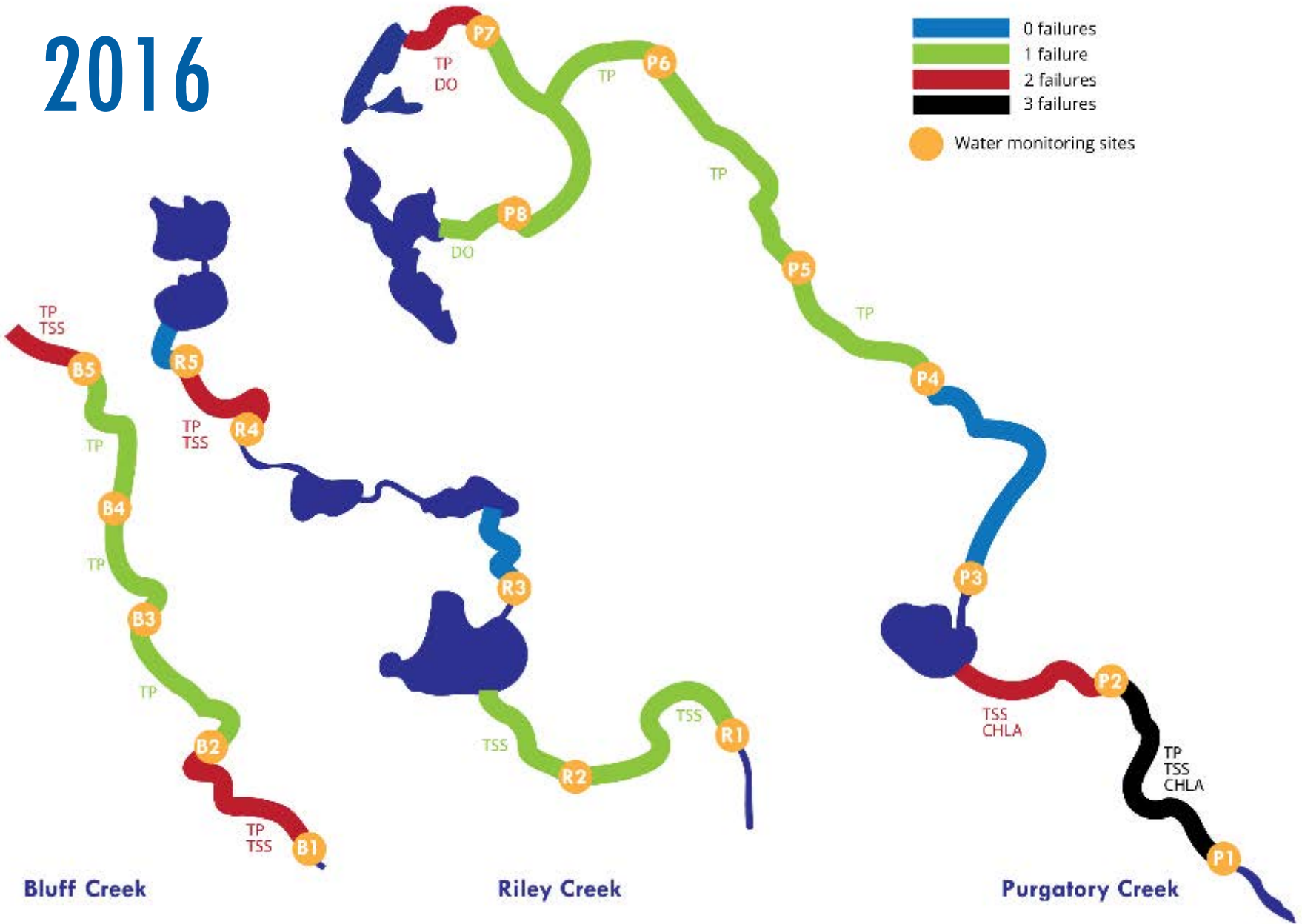
2017 LAKE WATER QUALITY



2017 CREEK WATER QUALITY



2016

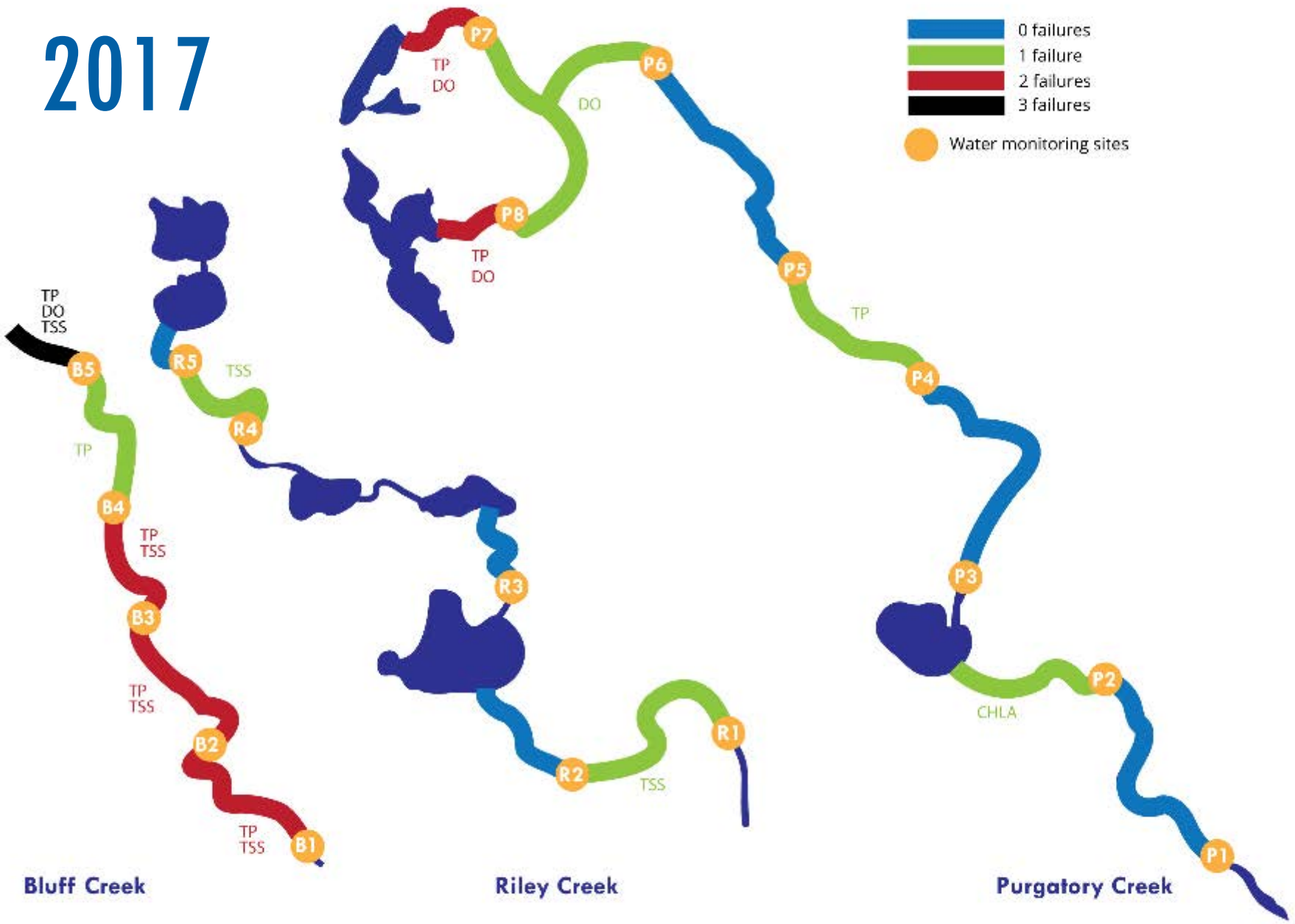


Bluff Creek

Riley Creek

Purgatory Creek

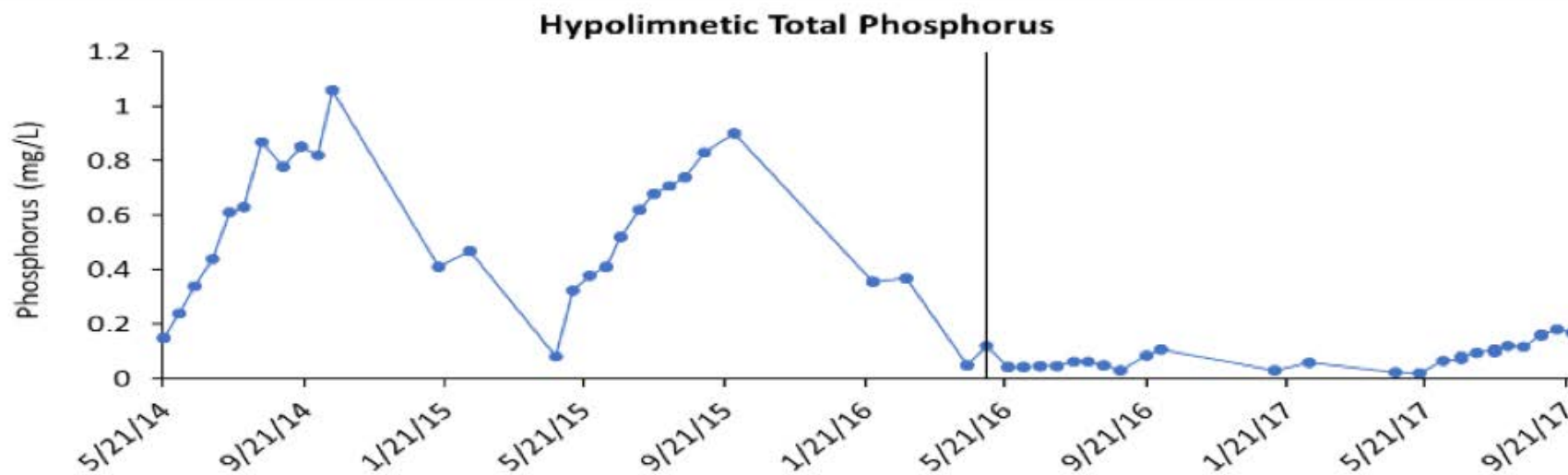
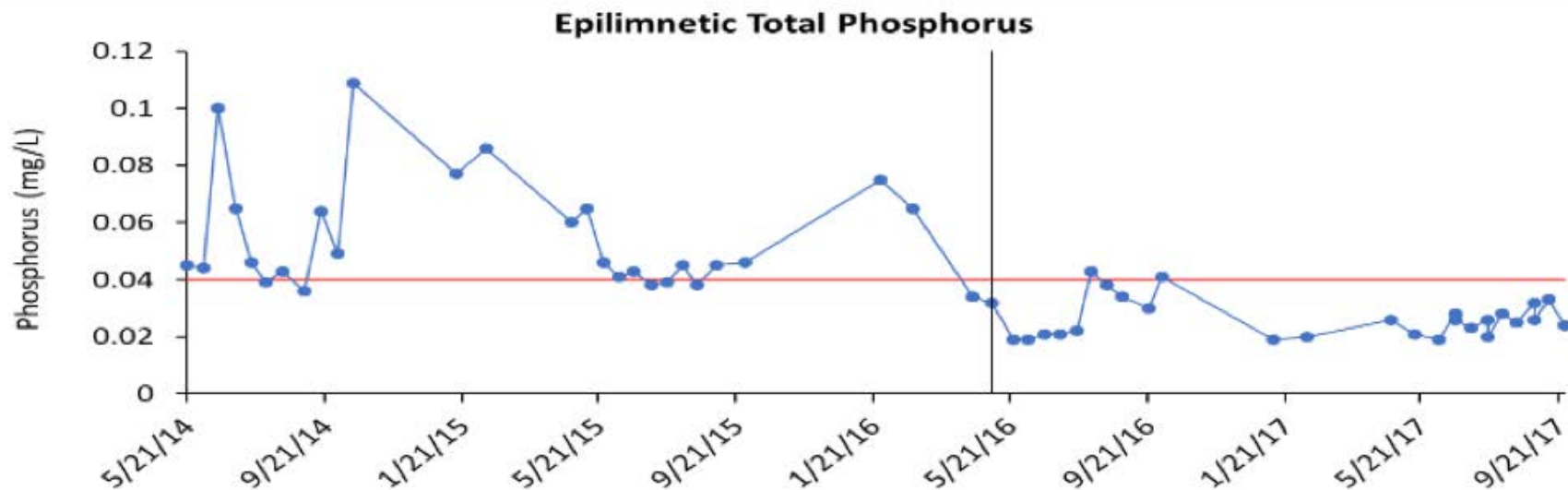
2017



Miscellaneous Projects/Monitoring



Lake Riley Alum Treatment



Spent Lime Treatment System

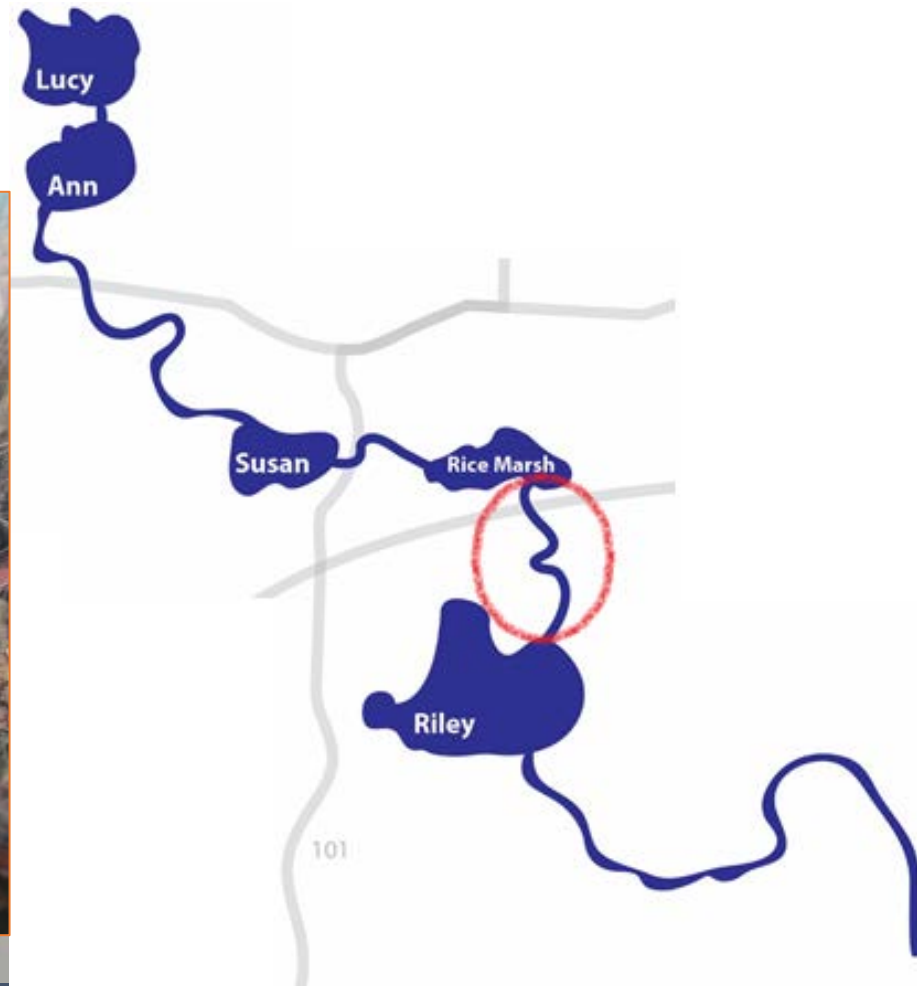
- System Sealed Up
- 17 Samples Collected
- Variable Results (11 indicated reductions)
- Water was entering the sampling location?
- Sample in Ports



CRAS Update

• Reach 3 – Riley Creek

- All scores improved except R3E.

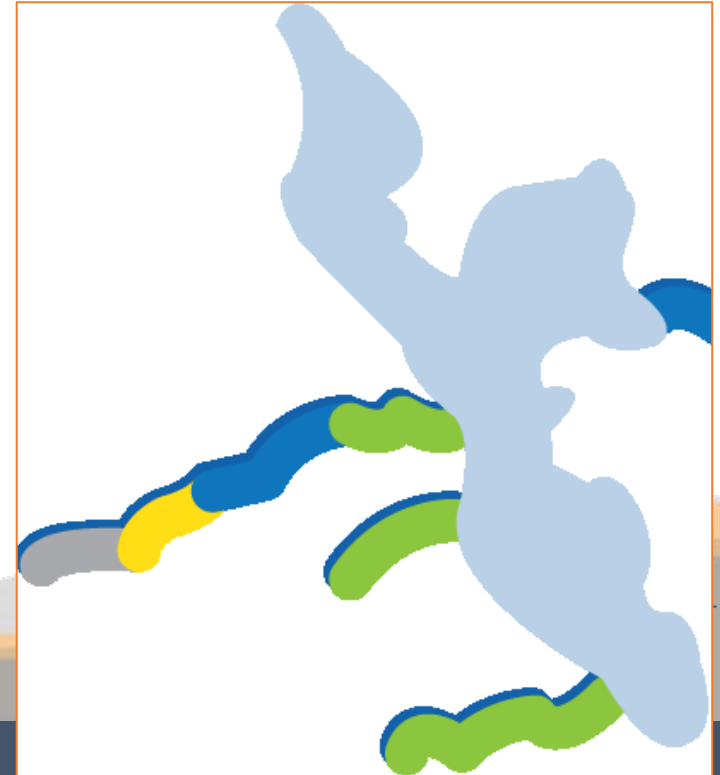


CRAS Update

- **Purgatory Creek – Lotus Ravines**

- Most subreaches had slightly reduced scores.

- PT2B shifted from good to poor.



AQUATIC INVASIVE SPECIES MONITORING







General AIS Monitoring/Treatment

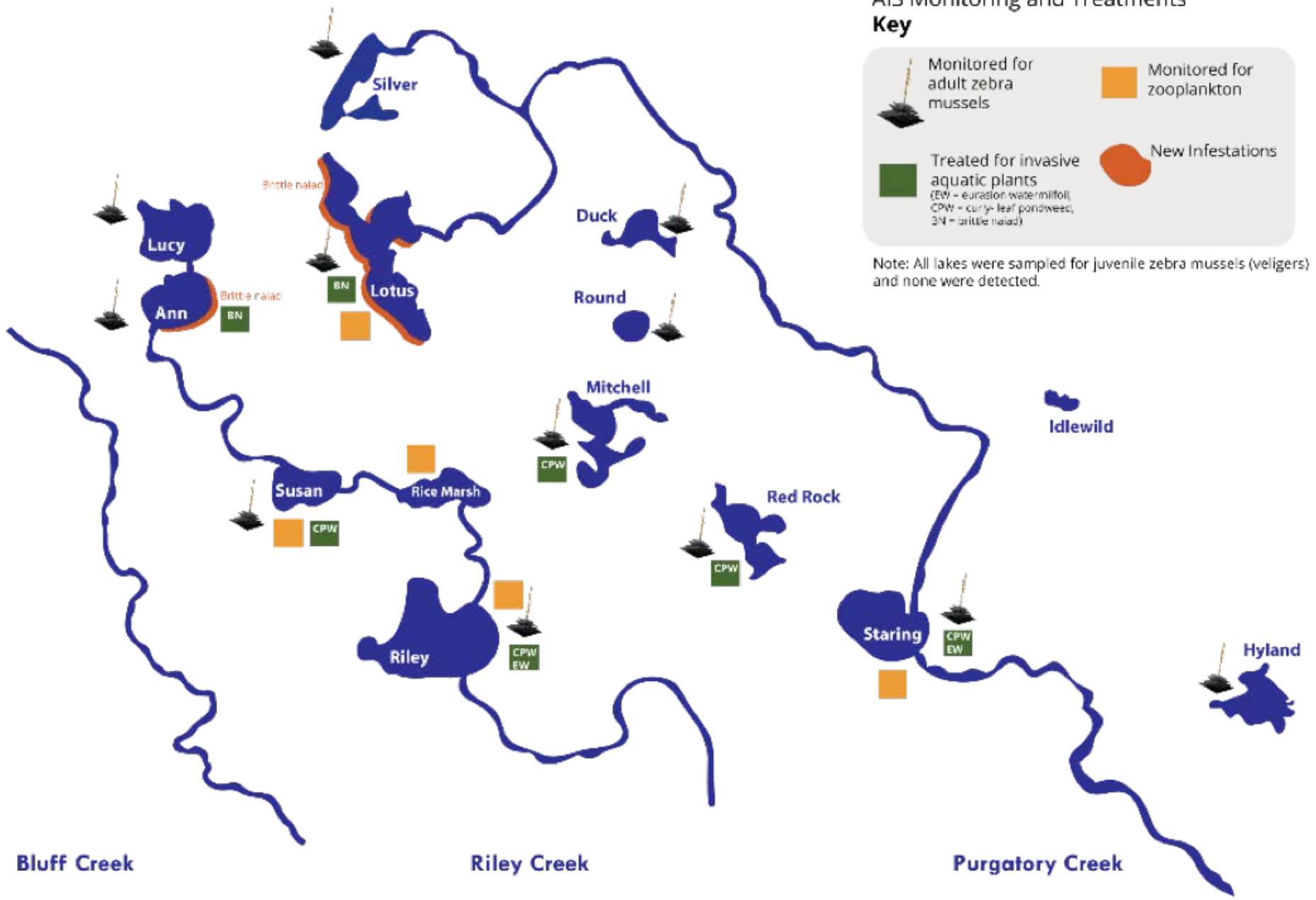


AIS Monitoring and Treatments

Key

	Monitored for adult zebra mussels		Monitored for zooplankton
	Treated for invasive aquatic plants (EW = eurasian watermilfoil, CPW = curly-leaf pondweed, BN = brittle naiad)		New Infestations

Note: All lakes were sampled for juvenile zebra mussels (veligers) and none were detected.



Bluff Creek

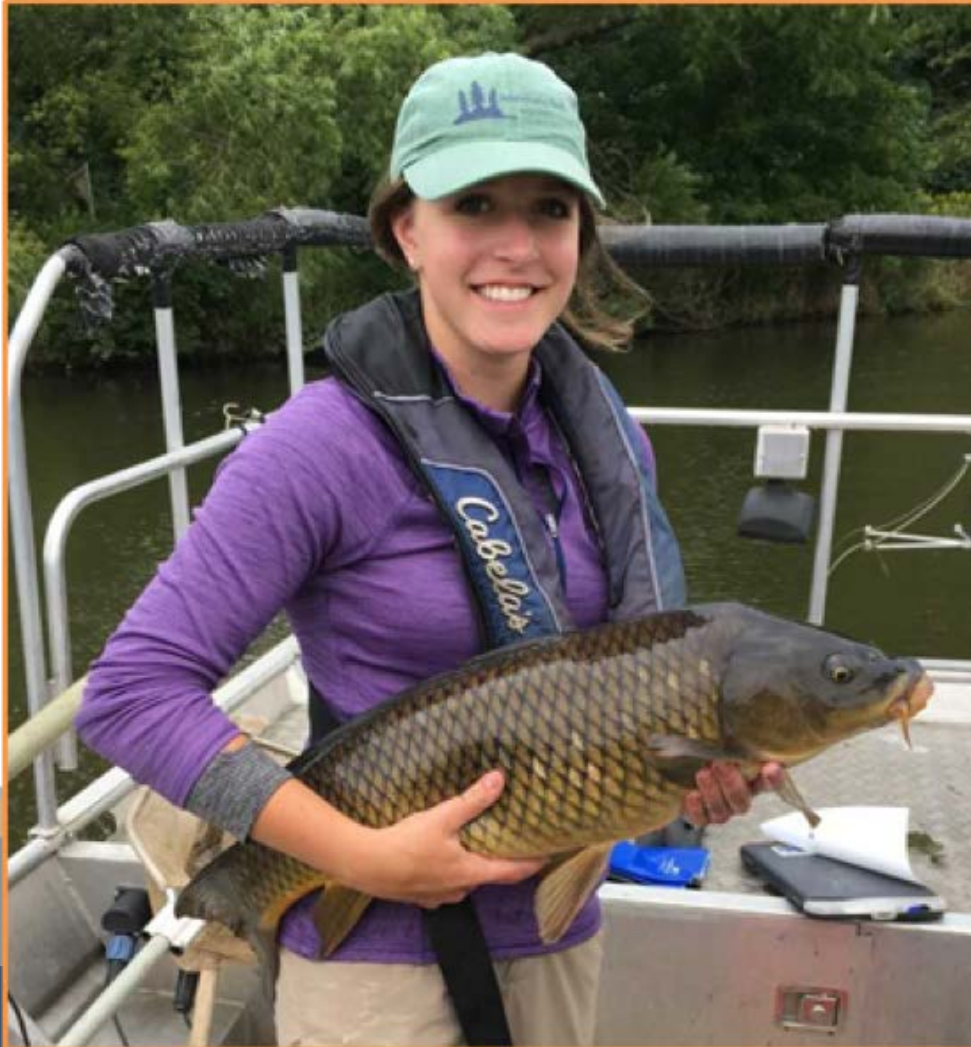
Riley Creek

Purgatory Creek

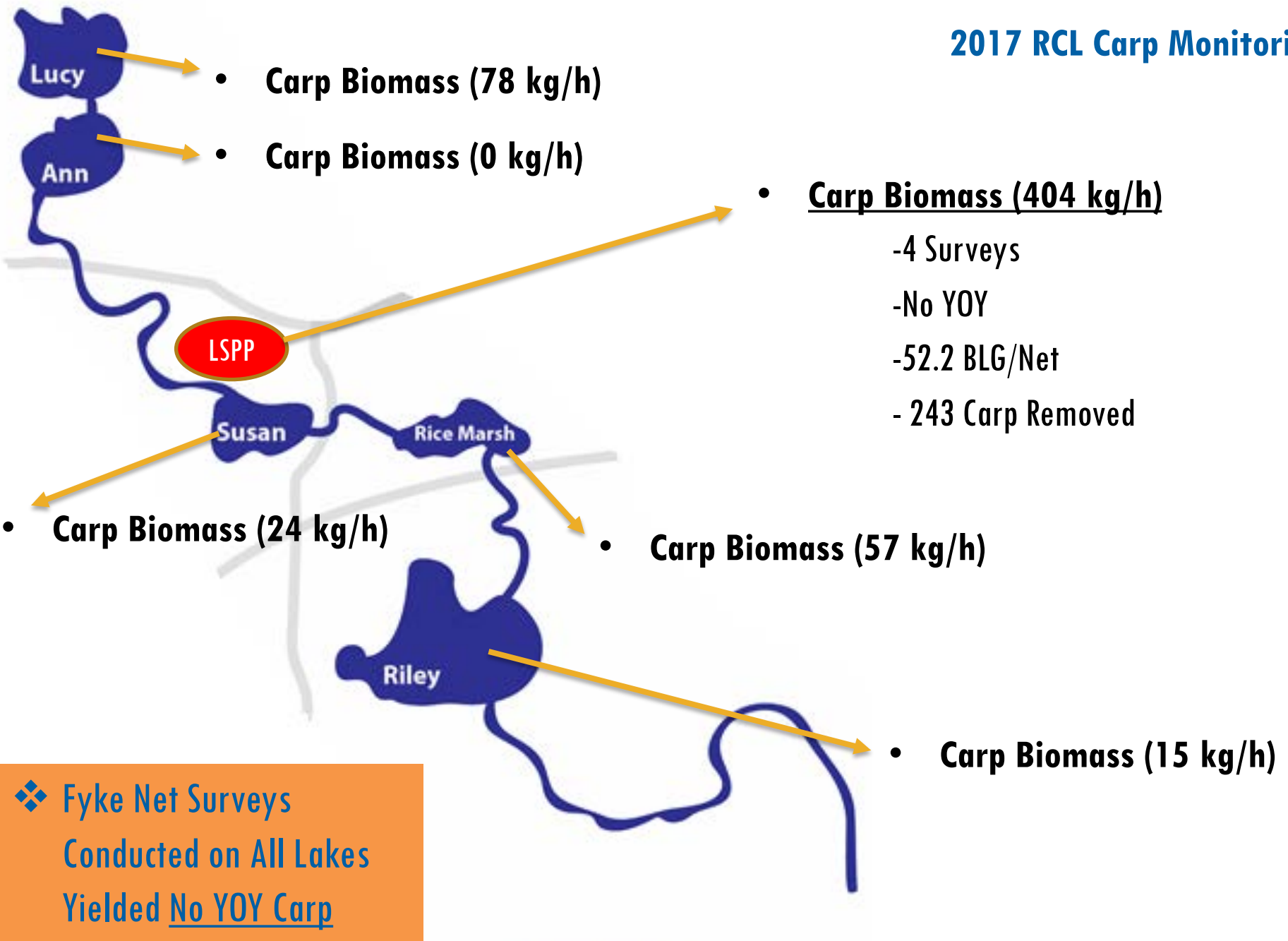
Eurasian Water Milfoil – Staring Lake



Carp Monitoring Results



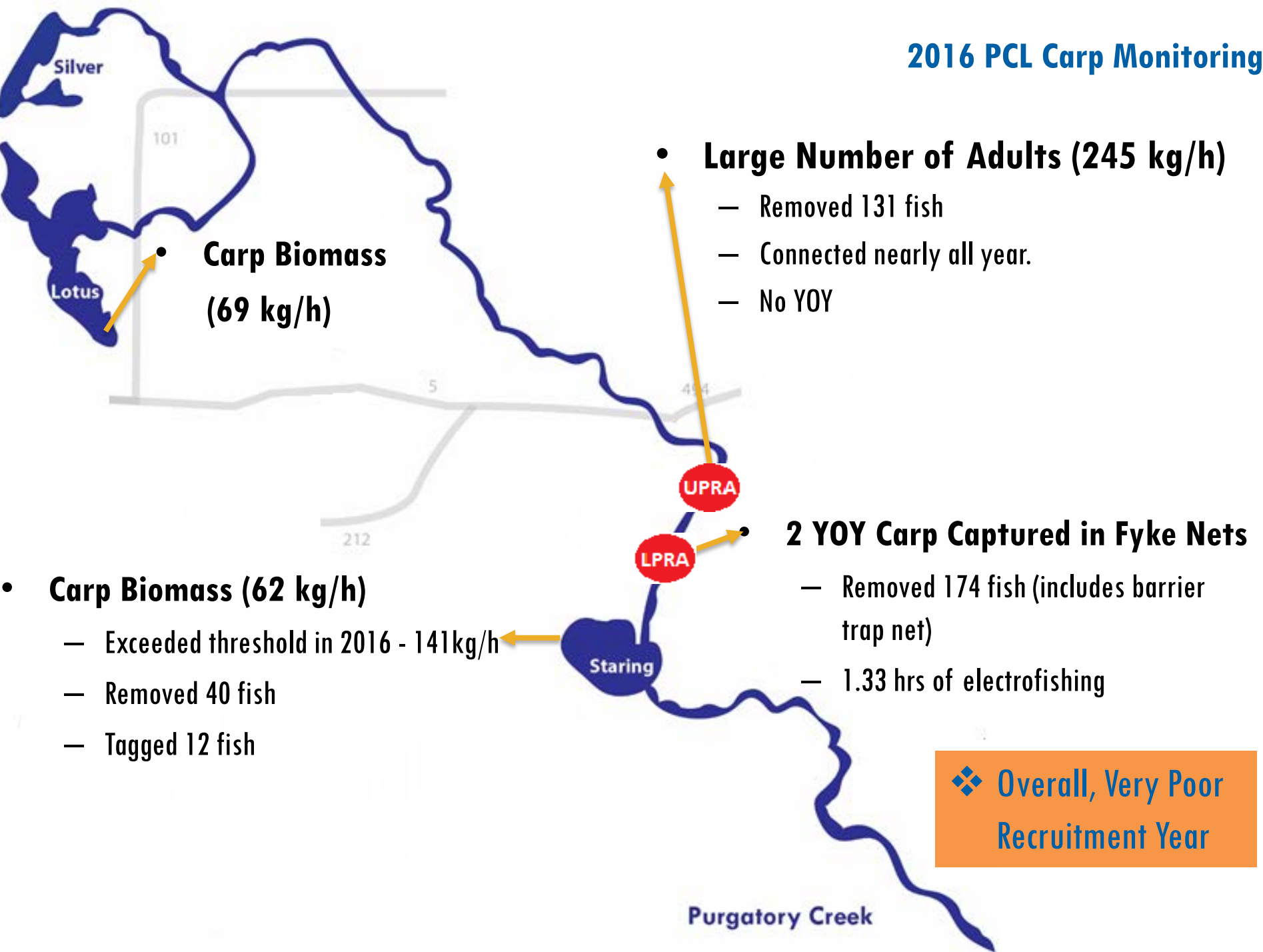
2017 RCL Carp Monitoring



❖ **Fyke Net Surveys**
Conducted on All Lakes
Yielded No YOY Carp

Riley Creek

2016 PCL Carp Monitoring



2018 Next Steps – Common Carp

- Continue Monitoring PCL & LSPP
- Leave Barrier Closed in 2017
- Potential Open Water Seine
- Set trap net – backpack electrofishing



Questions





2017 Education & Outreach



Education & outreach

Improving water quality by leveraging the power of an engaged community to effect meaningful change.

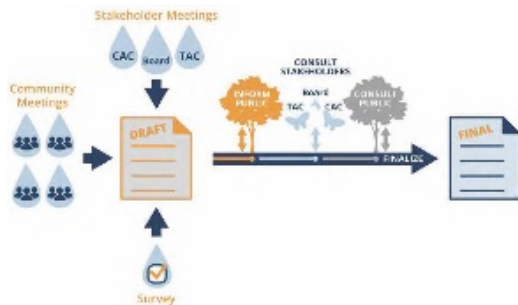
	Activity	Description	Engagement type(s)	Audience	Reach
Volunteer Program					
Local Leaders Program					
Youth Outreach Program					
Continuing Education Program					
Communications Program					



Citizen advisory committee

Advising the watershed district as representatives of citizen interests and promoting clean water action in our community.

10-Year Plan Update



25 x 25 Meeting



Action Projects



In 2017, the watershed district's Citizen Advisory Committee contributed to the district's work through:



Review
of projects & programs



Action
projects

Cost share program

Funding and support for community projects that protect, improve, and increase awareness of water resources.



In 2017, the watershed district's cost-share program funded seven community projects to protect and improve water resources:



7
projects



14,250 ft²
of shoreline restored

Volunteer program

Fostering stewardship and growing capacity through fun, impactful volunteer opportunities.

Adopt a Dock



Master Water Stewards



Service Learners



In 2017, the watershed district's volunteer program engaged community members through three different opportunities and four events:

40 
volunteers

345 
hours volunteered

7 
programs & events



Local leaders program

Engaging and supporting appointed, elected, and informal leaders in the shared work of protecting clean water.

Community resiliency workshops



Watershed tour



In 2017, the watershed district's local leader program engaged community members through a watershed tour, workshops, and presentations:

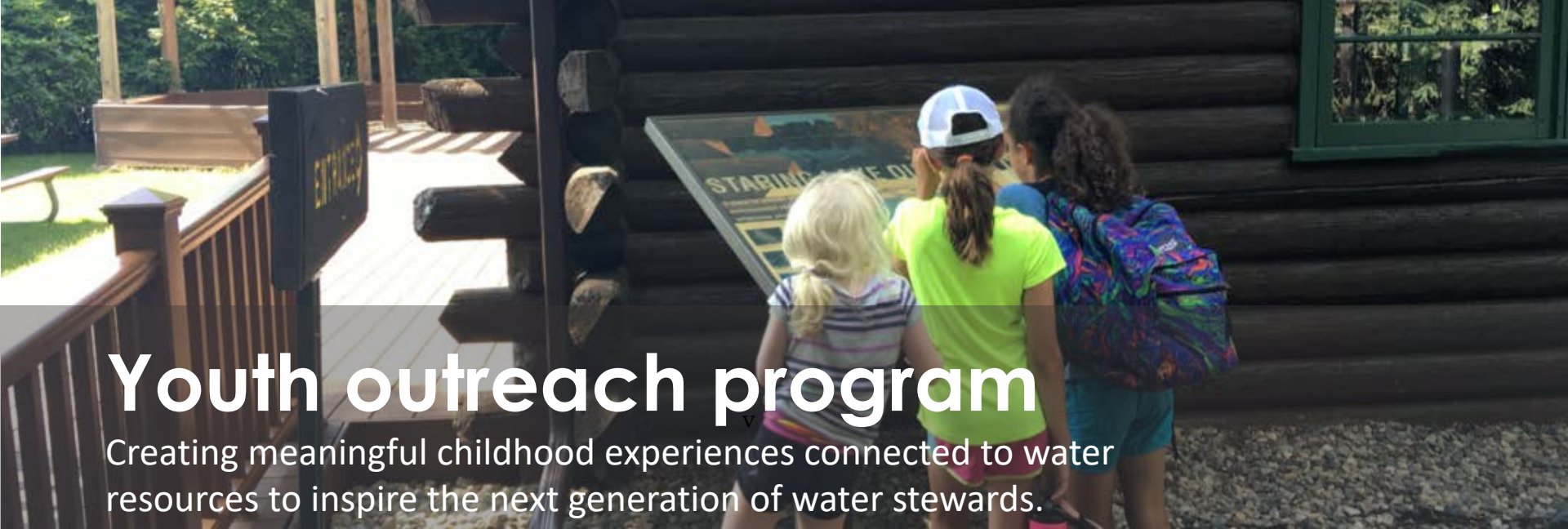
59 
tour attendees



Resiliency
planning



7
activities



Youth outreach program

Creating meaningful childhood experiences connected to water resources to inspire the next generation of water stewards.

Earth day mini grants



Starting nature center partnership



School & community events



In 2017, the watershed district's youth outreach program engaged children and their families by:



1170

individuals reached



3

mini-grant projects



14

Activities & events

Continuing education program

Educational opportunities for community members to grow their water resource and best practices knowledge.

Project WET



Turf & Winter Maintenance Training



Other topics



In 2017, the watershed district's continuing education program served the community through:

 **178**
participants

 **7**
Trainings & events



Communications program

Engaging the public through diverse communication methods from event tabling to social media and publications.

Annual Communication



Fact sheets



Newsletters & releases

Tour the Riley Purgatory Bluff Creek Wa
with a guide July 21, 2017

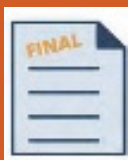


The Riley Purgatory Bluff Creek Watershed District invites you on a tour of your local area, events, and wetlands, July 21.
With these events, over a dozen meals, and many acres of wetlands for watershed to visit.

Engagement events



In 2017, the watershed district's communications program engaged the community and raised awareness through:



1000
fact sheets



12
events

6
newsletters

2000
annual communications