

RESTORATION PROJECT Bluff Creek

The vision for this project is to improve the health of this section of Bluff Creek by reducing streambank erosion and reconnecting the creek with nearby wetland is healthy. This will ultimately contribute to the goal of developing a more diverse, healthy, and resilient ecosystem.

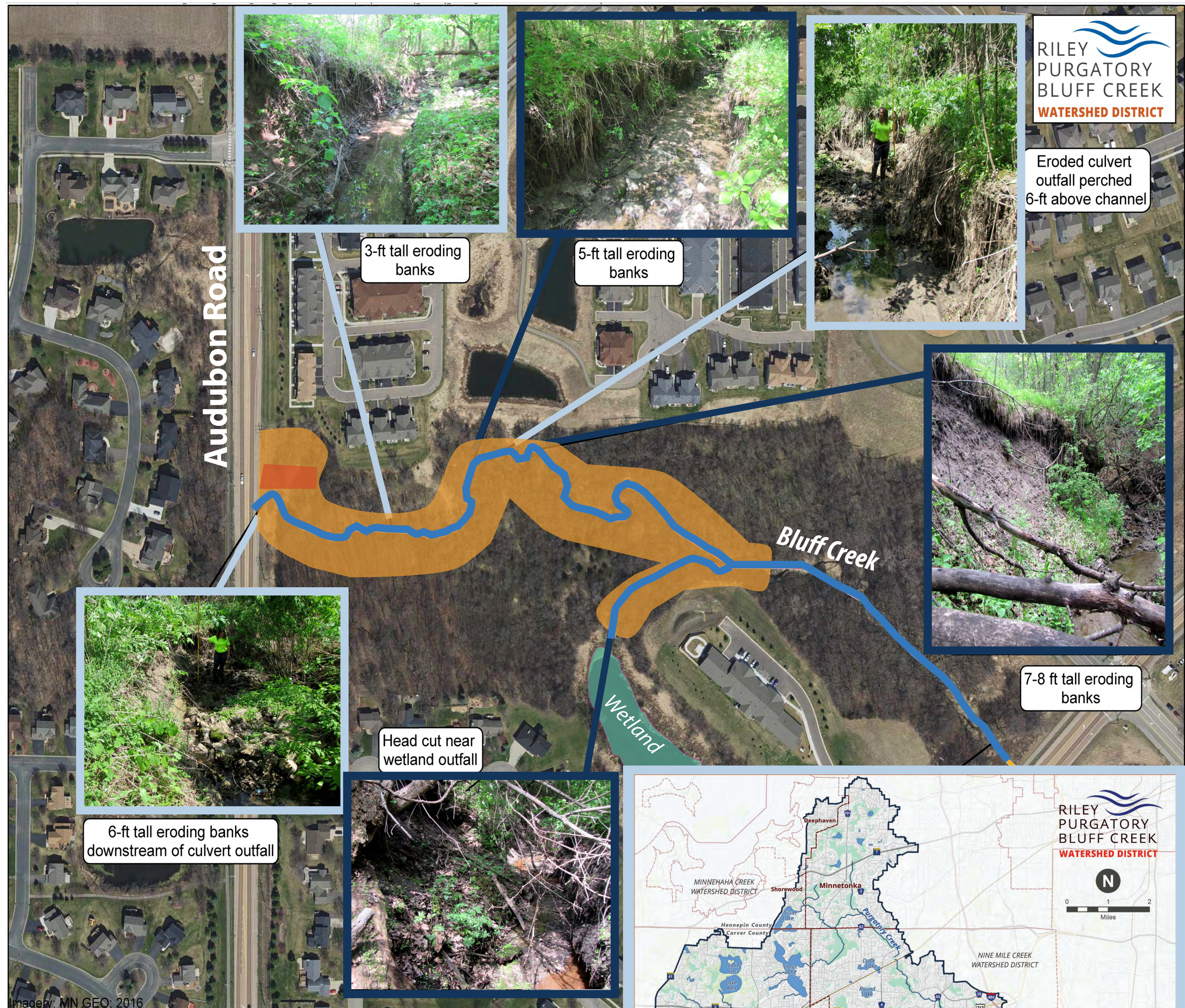
At present, Bluff Creek is unhealthy due to high levels of sediment in the water. When it rains, stormwater rushes across paved surfaces and through the creek, leading to erosion of the stream bank and surrounding slopes. This erosion causes soil and other sediments to wash into the water, altering the streambed and negatively impacting aquatic flora and fauna. The project area includes a section of the creek that is connected to a nearby wetland, and further erosion in the streambed could cause irreparable damage to this wetland and the life that it supports.

If nothing is done, erosion will continue to pollute the water of Bluff Creek and degrade nearby habitat. For this reason, the Riley Purgatory Bluff Creek Watershed District and the City of Chanhassen are working together to stabilize and enhance the creek. The Bluff Creek Restoration Project is a multi-year project that will begin in late 2018. Through the implementation of a variety of stream restoration strategies, local experts will work to stabilize the streambanks and create a local environment that supports healthy aquatic life.

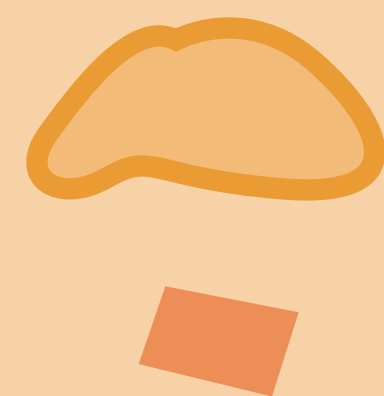
You can help by implementing water friendly practices that decrease stormwater runoff from your property. Together, we can make a difference in the health of Bluff Creek.

PROJECT PARTNERS

This project is made possible through the financial contributions of the following partners:



**BLUFF CREEK
PROJECT AREA**



Project boundary (approximate)

Construction access point