

Acronyms used in District materials

District Plan Implementation Report Card

Flood Risk Maps

2022 Water Resources Report

Acronyms used in District materials

ACEC	American Council of Engineering Companies
AIS	Aquatic Invasive Species
APWA	American Public Works Association
ASCE	American Society of Consulting Engineers
BFE	Base Flood Elevation
BMP	Best Management Practices
BWSR	Board of Water and Soil Resources
CAC	Citizens Advisory Committee
CIP	Capital Improvement Program
CRAS	Creek Restoration Action Strategy
CWA	Clean Water Act
CWF	Clean Water Fund
DWSMA	Drinking Water Supply Management Area
E&O	Education and Outreach
FEMA	Federal Emergency Management Agency
FIS	Flood Insurance Study
GIS	Geographic Information Systems
IAP2	International Association of Public Participation
IDDE	Illicit Discharge Detection and Elimination
LID	Low Impact Development
LGU	Local Government Unit
LOMA	Letter of Map Amendment
LVMP	Lake Vegetation Management Plan
MAWD	Minnesota Association of Watershed Districts
MBS	Minnesota Biological Survey
MCES	Metropolitan Council Environmental Services
MDA	Minnesota Department of Agriculture
MDH	Minnesota Department of Health
MDNR	Minnesota Department of Natural Resources
MnDOT	Minnesota Department of Transportation
MnRAM	Minnesota Routine Assessment Methodology
MLCCS	Minnesota Land Cover Classification System
MOU	Memorandum of Understanding
MPCA	Minnesota Pollution Control Agency
MRCC	Midwestern Regional Climate Center
MS4	Municipal Separate Storm Sewer System
MSHA	Minnesota Stream Habitat Assessment
MSL	Mean Sea Level
MSP	Minneapolis-St. Paul International Airport
MUSA	Metropolitan Urban Service Area
NAPP	National Aerial Photography Program
NFIP	National Flood Insurance Program
NHIS	Natural Heritage Information System
NPDES	National Pollutant Discharge Elimination System
NOAA	National Oceanic and Atmospheric Administration

NRCS	Natural Resources Conservation Service
NRHP	National Register of Historic Places
NRI	Natural Resources Inventory
NURP	Nationwide Urban Runoff Program
NWI	National Wetland Inventory
OHWL	Ordinary High Water Level
PAHs	Polycyclic Aromatic Hydrocarbons
PI Survey	Point-intercept survey (approach to aquatic plant surveying using a grid pattern)
PRAP	Performance Review and Assistance Review
PWI	Public Waters Inventory
RCL	Riley Chain of Lakes
RPBCWD	Riley Purgatory Bluff Creek Watershed District
RWI	Restorable Wetlands Inventory
SHPO	State Historic Preservation Office
SSTS	Subsurface Sewage Treatment Systems
SSURGO	Soil Survey Geographic dataset
SWCD	Soil and Water Conservation District
SWPPP	Stormwater Pollution Prevention Plan
TAC	Technical Advisory Committee
TMDL	Total Maximum Daily Load
TP	Total Phosphorus
TP-40	Technical Paper 40
TP-49	Technical Paper 49
TSS	Total Suspended Solids
TRPD	Three Rivers Park District
UAA	Use Attainability Analysis
UMN	University of Minnesota
USACE	United States Army Corps of Engineers
USEPA	United States Environmental Protection Agency
USFWS	United States Fish and Wildlife Service
USDA	United States Department of Agriculture
USGS	United States Geologic Survey
VIC	Voluntary Investigation and Cleanup
WCA	Wetland Conservation Act
WHPP	Wellhead protection plan
WMO	Watershed Management Organization
WOMP	Watershed Outlet Monitoring Program
WRAPS	Watershed Restoration and Protection Strategy
WSTMP	Wetland Status and Trends Monitoring Program
YOY	Young of the Year

District Plan Implementation Report Card

PRAP Organizational Assessment

Part 2-Performance Standards

2022

METRO WATERSHED DISTRICT and WMO PERFORMANCE STANDARDS

LGU Name: Riley Purgatory Bluff Creek Watershed District

Performance Area	Performance Standard	Level of Review	Rating	
			Yes, No, or Value	
			YES	NO
★	High Performance standard	I Annual Compliance		
	Basic practice or statutory requirement (see instructions for explanation of standards)	II BWSR Staff Review & Assessment (1/10 yrs.)		
Administration	■ Activity report: annual, on-time	I	X	
	■ Financial report & audit completed on time	I	X	
	■ Drainage authority buffer strip report submitted on time	I	NA	
	■ eLINK Grant Report(s): submitted on time	I	X	
	■ Rules: date of last revision or review – Please enter month/year (i.e., 01/20)	II	Aug 2018	
	■ Personnel policy: exists and reviewed/updated within last 5 years	II	X	
	■ Data practices policy: exists and reviewed/updated within last 5 years	II	X	
	■ Manager appointments: current and reported	II	X	
	■ Consultant RFP: within 2 yrs. for professional services	II	X	
	■ WD/WMO has resolution assuming WCA responsibilities and appropriate delegation resolutions as warranted (N/A if not LGU)	II	X	
	■ WD/WMO has knowledgeable & trained staff that manages WCA program or has secured qualified delegate. (N/A if not LGU)	II	X	
	★ Administrator on staff	II	X	
	★ Board training: orientation and continuing education plan, record for each board member	II	X	
	★ Staff training: orientation and continuing education plan and record for each staff	II	X	
★ Operational guidelines for fiscal procedures and conflicts of interest exist and current	II	X		
★ Public drainage records: meet modernization guidelines	II	NA		
Planning	■ Watershed management plan: up-to-date	I	X	
	■ City/twp. local water plans not yet approved	II		X
	■ Capital Improvement Program: reviewed every 2 years	II	X	
	★ Strategic plan or self-assessment completed in last 5 years	II		X
	★ Strategic plan identifies short-term priorities	II		X
Execution	■ Engineer Reports: submitted for DNR & BWSR review	II	X	
	■ WCA decisions and determinations are made in conformance with all WCA requirements, (if delegated WCA LGU)	II	X	
	■ WCA TEP reviews & recommendations appropriately coordinated. (if delegated WCA LGU)	II	X	
	★ Certified wetland delineator on staff or retainer	II	X	
	■ Total expenditures per year (past 10 yrs.)	II		see below
	★ Water quality trends tracked for key water bodies	II	X	
	★ Watershed hydrologic trends monitored / reported	II	X	
Communication & Coordination	■ Website: contains information as required by MR 8410.0150 Subpart 3a, i.e. as board meeting, contact information, water plan, etc.	II	X	
	■ Functioning advisory committee(s): recommendations on projects, reports, 2-way communication with Board	II	X	
	■ Communication piece: sent within last 12 months	II	X	
	Communication Target Audience:			
	★ Track progress for Information and Education objectives in Plan	II	X	
	★ Coordination with County Board, SWCD Board, City/Township officials	II	X	
	★ Partnerships: cooperative projects/tasks with neighboring organizations, such as counties, SWCDs, WDs, tribal governments, Non-Government Organizations	II	X	

Year	2013	2014	2015	2016	2017	2018	2019	2020	2021	2022
Expenditures	1,877,000	1,968,000	1,738,983	1,607,440	2,859,000	3,157,243	3,038,390	4,911,237	4,290,671	1,976,046*

* Through May

Purgatory Creek Watershed

Riley Creek Watershed

Bluff Creek Watershed

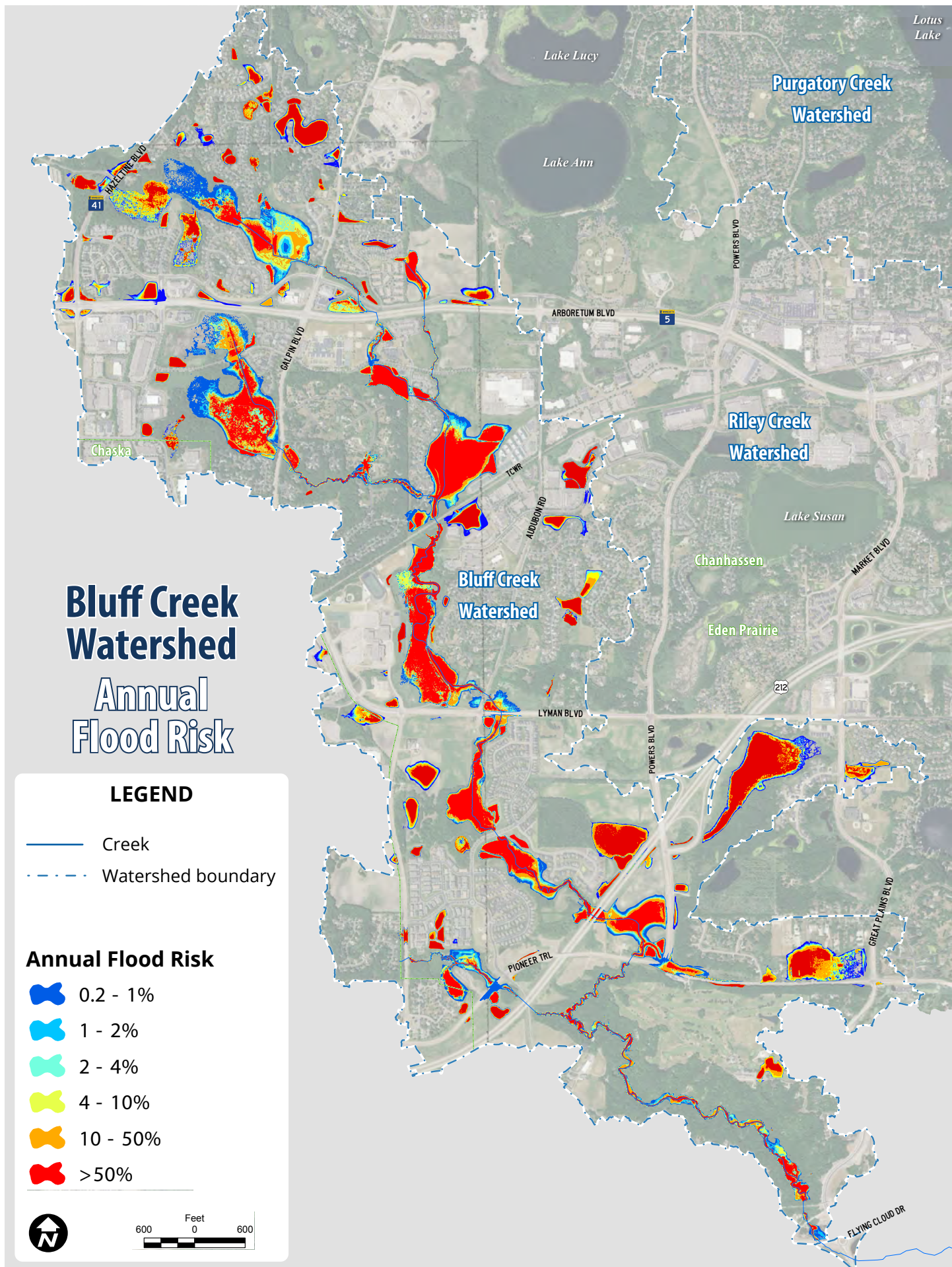
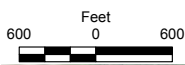
Bluff Creek Watershed Annual Flood Risk

LEGEND

- Creek
- - - Watershed boundary

Annual Flood Risk

- 0.2 - 1%
- 1 - 2%
- 2 - 4%
- 4 - 10%
- 10 - 50%
- >50%



Riley Creek Watershed Annual Flood Risk

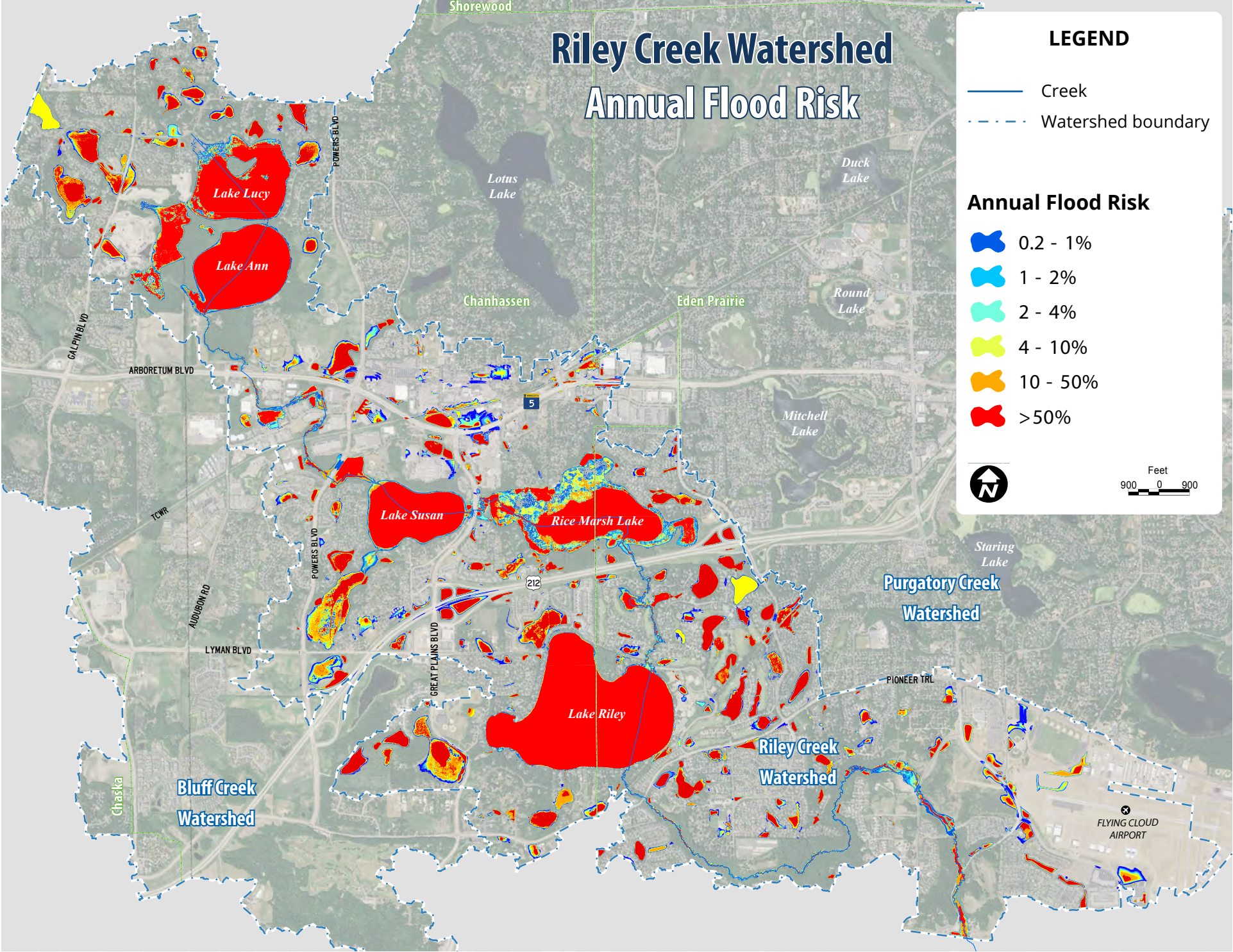
LEGEND

- Creek
- Watershed boundary

Annual Flood Risk

- 0.2 - 1%
- 1 - 2%
- 2 - 4%
- 4 - 10%
- 10 - 50%
- >50%

Feet
900 0 900



Purgatory Creek Watershed - NORTH

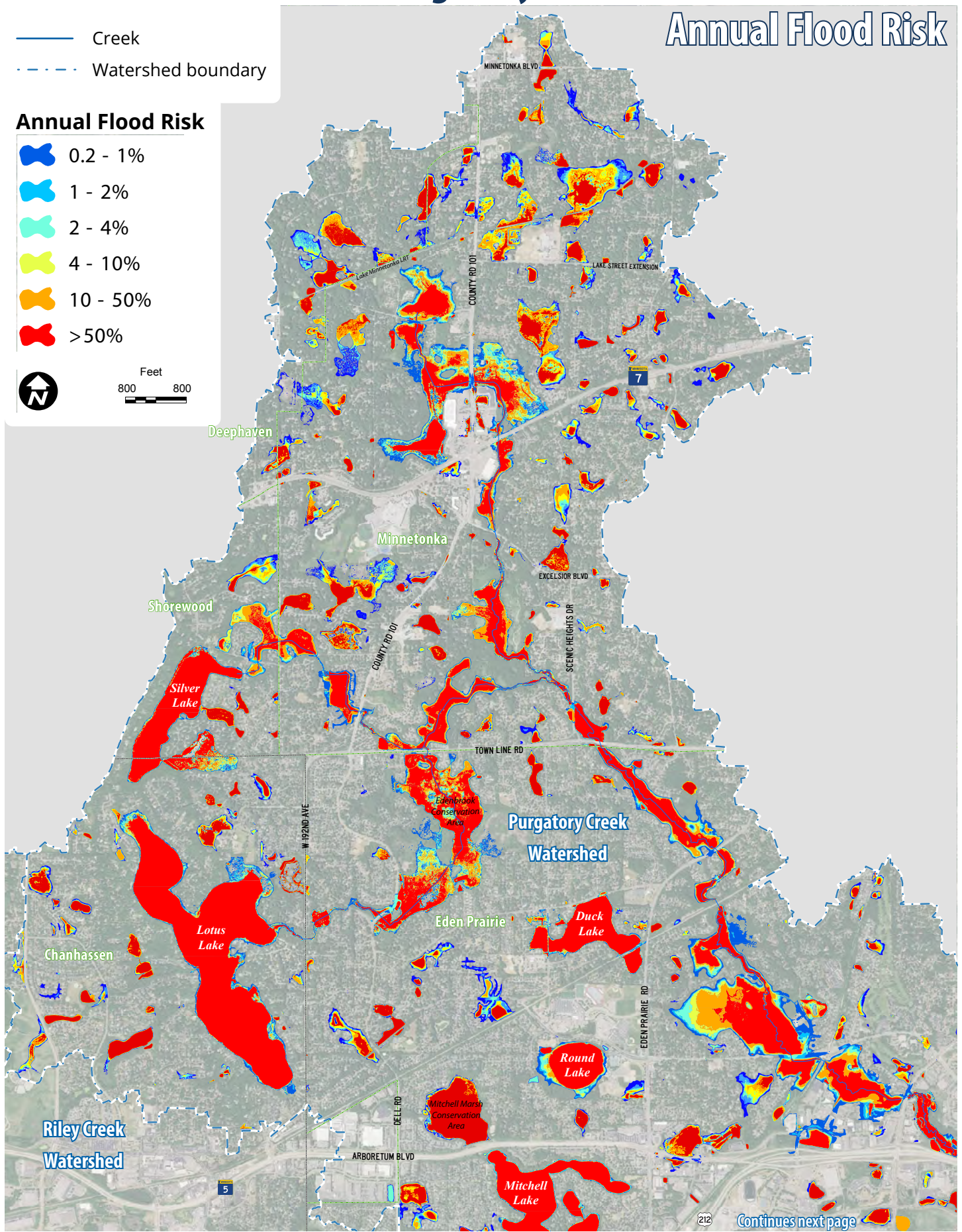
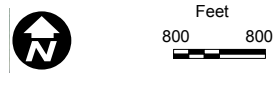
Annual Flood Risk

LEGEND

- Creek
- - - Watershed boundary

Annual Flood Risk

- 0.2 - 1%
- 1 - 2%
- 2 - 4%
- 4 - 10%
- 10 - 50%
- >50%



Continues next page

