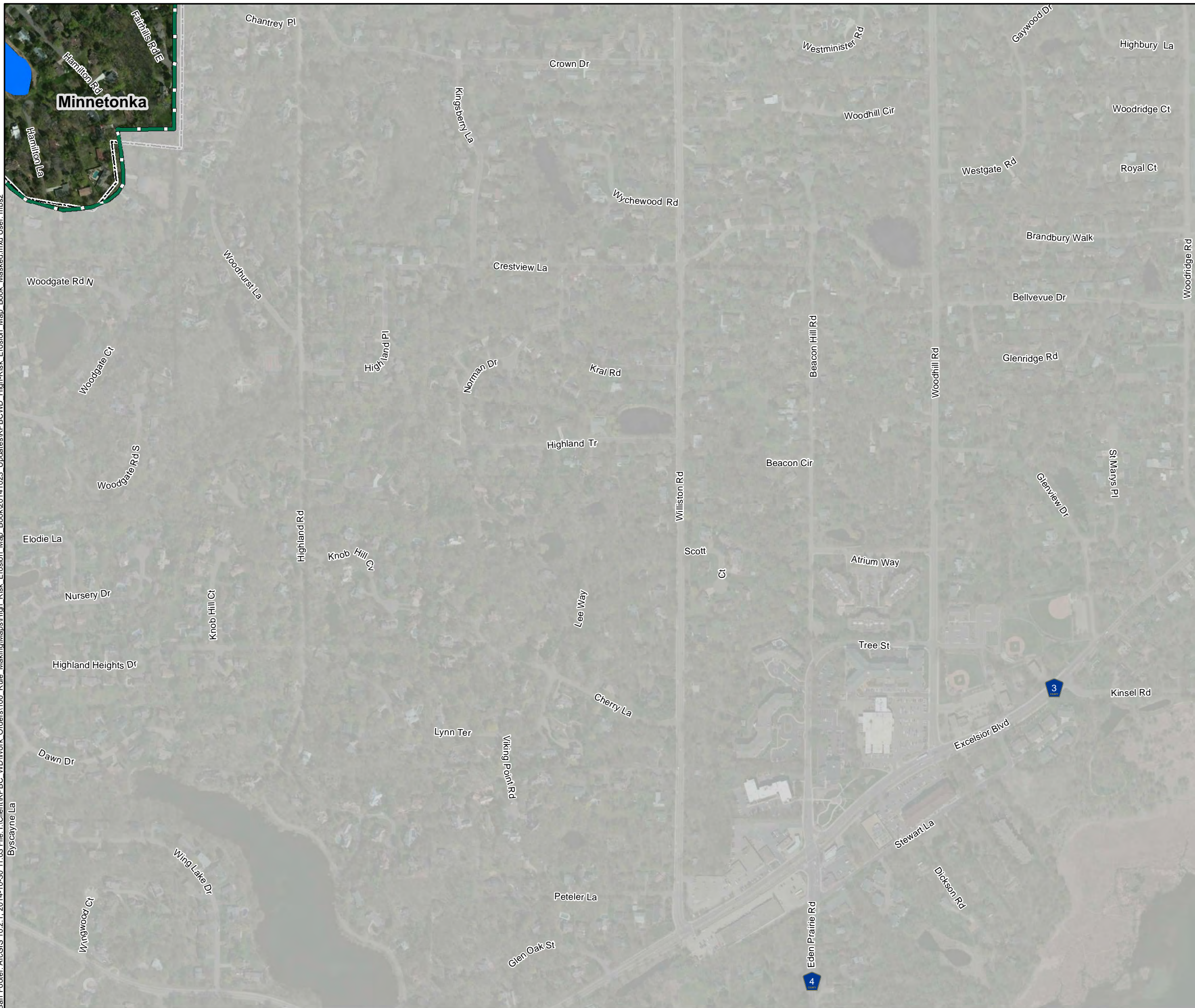
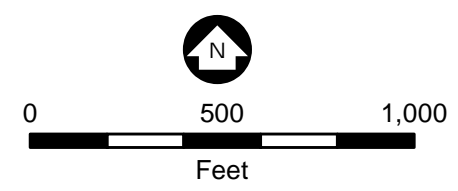
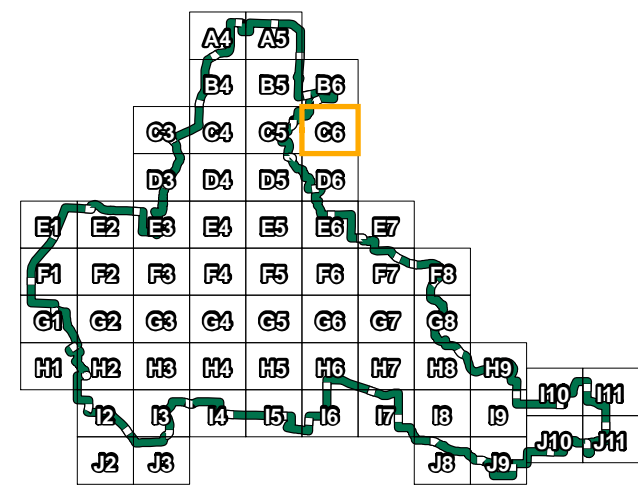


Barr Footer: ArcGIS 10.2.1, 2014-10-30 11:03 File: I:\Client\RPBC_WD\Work Orders\100 Rule Making\Map\High Risk Erosion Map Book\20141023 Updates\RPBC\WD_HighRiskErosion_Map_Book_Masked.mxd User: mbs2



- High Risk Erosion Areas (Barr Eng.)
- Streams within High Risk Erosion Areas (Barr Eng.)
- Steep Slopes >18% (Barr Eng.)
- Lake/Pond (MetCouncil)
- Streams/Creeks (PWI)
- District Boundary
- County Boundary (Mn/DOT)



Service Layer Credits: Source: Esri, DigitalGlobe, GeoEye, i-cubed, USDA, USGS, AEX, Getmapping, Aerogrid, IGN, IGP, and the GIS User Community



10/30/2014
Map: C6

HIGH RISK EROSION AREAS
RILEY PURGATORY BLUFF
CREEK WATERSHED DISTRICT